

1

Sherpascopic Assembly Instructions



Sherpascopic Height Adjustable Work Platform



General principles for selection of work equipment for work at height

1.—

(1) Every employer, in selecting work equipment for use in work at height, shall—

(a) take account of—

- (i) the working conditions and to the risks to the safety of persons at the place where the work equipment is to be used;
- (ii) in the case of work equipment for access and egress, the distance to be negotiated;
- (iii) the distance and consequences of a potential fall
- (iv) the duration and frequency of use;
- (v) the need for easy and timely evacuation and rescue in an emergency;
- (vi) any additional risk posed by the use, installation or removal of that work equipment or by evacuation and rescue from it; and
- (vii) the later provisions of these Regulations; and

(b) give collective protection measures priority over personal protection measures.

(2) An employer shall select work equipment for work at height which—

(a) **has characteristics including dimensions which—**

(i) are appropriate to the nature of the work to be performed and the foreseeable loadings;

and

(ii) allow passage without risk; and

is in other respects the most suitable work equipment, having regard in particular to the purposes specified in regulation 6(3).

Zarges UK are part of the Zarges-Tubesca group, the largest ladder manufacturer in Europe and second largest in the world.

The general requirements of a suitable work platform are:

Safety.

Ability to work at various heights.

Portability.

We have reviewed the working platforms being offered based around mobile scaffolding design and parts.

None of these products are made to meet any standard, they are out with the design scope of any ladder standard and the scaffolding standard HD1004 only begins to apply on towers of 2.4 metres platform height and above.

France is the only country which has produced a standard which tests mobile work platforms with platform heights from 1m to 2.5m

This is the standard **NF P 93-352**.






This standard defines the tests and maximum loads for the rungs and platforms and guardrails.

More importantly it is the only standard which defines a test for toppling. (details of the tests are attached).

The **Sherpascopic** and **Sherpamatic** work platforms from **Tubesca** satisfy these requirements.

Sherpascopic Height Adjustable Work Platform

A folding work platform with single sided access which offers platform heights from 1.06 m to 2.23 m.

Platform size:		600 x 420 mm.	
Model no		2272/200	2272/201
Closed height		2.38 m	3.13 m
Platform ht.		1.06 m to 1.52 m	1.77 m to 2.23 m
No of rungs		4 to 6	7 to 9
Weight		30 kg	36 kg
Base width		2.15 m	2.30 to 2.90 m
Working height		3.06 m to 3.52 m	3.77 m to 4.23 m





4 tread 1.06 m platform height

One unit easily adjustable to three heights.
No tools required.



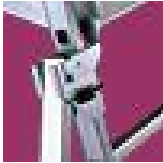
5 tread 1.31 m platform height



6 tread 1.52 m platform height

Sherpamatic fixed height work platforms.					
platform heights from 0.72 m to 1.65 m.					
Platform size:	600 x 420 mm.				
Model no	2272/103	2272/104	2272/105	2272/106	2272/107
Closed height m.	1.91	2.16	2.41	2.66	2.91
Platform height m.	0.72	0.95	1.2	1.42	1.65
Number of treads (including platform)	3	4	5	6	7
Weight kg.	19.5	21.3	24.5	25.8	27.8
Base width m.	1.16	1.33	1.6	1.81	2.04
Working height m.	2.62	2.85	3.1	3.32	3.55

The Sherpamatic offers all of the safety features of the Sherpascopic platforms but with a fixed height platform.



Integral stabilisers with safety interlock provide lateral stability. Platform cannot be erected without first deploying the stabilisers.



Stabilisers are adjustable for use on uneven ground.



Stabilisers may be closed for use close to walls.



Very stable design. Prevention of toppling from front, rear and sides.



Compact when closed, 2.38 x 0.8 x 0.4 m. Easily manoeuvrable with large 200 mm diameter wheels.

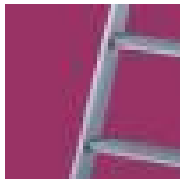


Easy height adjustment.





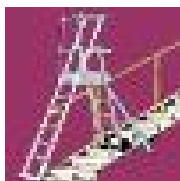
Large tool tray



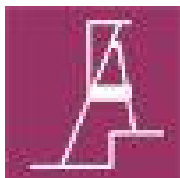
250 mm rung spacing.



150 kg static load.



Adjustable for use on stair





Ø It is impossible to open the platform until the stabilisers are in place.

Ø Loosen the plastic knobs to release the stabilisers.





Ø Pull the platform downwards while keeping the front legs slightly off the ground to open the Sherpascope



Ø Fully extend the stabilisers and lock them in place by tightening the knobs.





Ø Erect the guardrail by holding each side as shown and lifting upwards.

Ø The locking bolts must locate in the holes as shown. The locking bolts are spring-loaded and should locate automatically.

Ø Ensure the locking bolts are secure.





ØClose the gate by lowering it downwards.

ØLock the gate in the closed position by locating it in the locking hooks.

ØThe Sherpascope platform is now ready for use.





ØUnlock the stabilisers by loosening the knobs.

ØEnsure that the stabilisers are free to move.

ØThe spring locking bolts are operated by a cable and lever.

ØRelease the bolts by turning the lever.



Sherpascope Assembly Instructions



ØSlide the two sections apart.

ØThe bolts will locate in the holes automatically.

ØRepeat the operation for the side.

ØEnsure that all locking bolts are engaged and located in the correct holes.

ØReposition the stabilisers and lock them firmly in place



Sherpascope Assembly Instructions



ØRelease the bolts for the guardrail.

ØSlide the handrail downwards.

ØOpen the gate.

ØUnlock the stabilisers.



Sherpascope Assembly Instructions



ØClose the steps by lifting the platform.

ØClose and lock the stabilisers.



Use against a wall

19

Sherpascope Assembly Instructions



Ø Loosen the plastic knob

Ø Lift the interlock

Ø Slide up the stabiliser to the closed position

Ø Lock the knob.

Ø Move platform to the required position.

The Sherpascope is compact for storage, there are no loose parts.



It is easily manoeuvrable.



It is possible to move the Sherpascope Work Platform for **SHORT DISTANCES** when it is in the open position. **EXTREME CARE** must be taken to ensure that the Sherpascope Work Platform does not collapse suddenly.



Contact information:

Zarges UK Ltd
8 Holdom Avenue
Saxon Park Industrial Estate
Bletchley
Milton Keynes
MK1 1QU

Technical Contact: Alistair Twigg