

# REMS Tiger ANC<sup>1</sup> REMS Tiger ANC VE<sup>2</sup> REMS Tiger ANC SR<sup>3</sup> REMS Tiger ANC pneumatic<sup>4</sup>

# REMS Panther ANC VE<sup>5</sup> REMS Cat ANC VE<sup>6</sup> REMS Akku-Cat ANC VE<sup>7</sup>

deu 1-3 Elektrische Rohr-Säbelsäge  
4 Pneumatische Rohr-Säbelsäge  
5-6 Elektrische Universal-Säbelsäge  
7 Akku-Universal-Säbelsäge  
Betriebsanleitung – Vor Inbetriebnahme lesen!

eng 1-3 Electric reciprocating pipe saw  
4 Pneumatic reciprocating pipe saw  
5-6 Universal electric reciprocating saw  
7 Universal battery reciprocating saw  
Operating Instructions – Read before commissioning!

fra 1-3 Scie sabre électrique pour tubes  
4 Scie sabre pneumatique pour tubes  
5-6 Scie sabre électrique universelle  
7 Scie sabre universelle à accu  
Instructions d'emploi – A lire avant la mise en service!

ita 1-3 Seghetto elettrico per tubi  
4 Seghetto pneumatico per tubi  
5-6 Seghetto universale elettrico  
7 Seghetto universale a batteria  
Istruzioni d'uso – Leggere prima della messa in servizio!

spa 1-3 Sierra de sable electroportátil para tubos  
4 Sierra de sable neumática para tubos  
5-6 Sierra de sable universal electroportátil  
7 Sierra de sable universal por acumulador  
Manual de instrucciones – ¡Leer antes de la utilización!

nld 1-3 Elektrische buisreciprozaag  
4 Pneumatische buisreciprozaag  
5-6 Elektrische universele reciprozaag  
7 Universele accureciprozaag  
Gebruiksaanwijzing – Voor ingebruikname lezen!

swe 1-3 Elektrisk rör-sabelsåg  
4 Pneumatisk rör-sabelsåg  
5-6 Elektrisk universal-sabelsåg  
7 Akku-universal-sabelsåg  
Bruksanvisning – Läs noga igenom före användning!

nor 1-3 Elektrisk bajonetsag for kapping av rør  
4 Luftdreven bajonetsag for kapping av rør  
5-6 Universal elektrisk bajonetsag  
7 Universal batteridrevet bajonetsag  
Bruksanvisning – Må leses før idriftsettelse!

dan 1-3 Elektriske bajonetsave  
4 Pneumatisk bajonetsav  
5-6 Elektriske universal bajonetsave  
7 Akku-universal bajonetsav  
Betjeningsvejledning – Læses før ibrugtagning!

fin 1-3 Sähkötoimiset puukkosahat putkien katkaisuun  
4 Painemaaltoimiset puukkosahat putkien katkaisuun  
5-6 Sähkötoimiset puukkosahat yleiskäyttöön  
7 Akkukäyttöiset puukkosahat yleiskäyttöön  
Käyttöohje – Lue ennen käyttöönottoa!

por 1-3 Serra de sabre eléctrica para tubos  
4 Serra de sabre pneumática para tubos  
5-6 Serra de sabre eléctrica universal  
7 Serra de sabre universal com acumulador  
Manual de instruções – Leia antes da colocação em serviço!

pol 1-3 Elektryczna pilarka szablasta do rur  
4 Pneumatyczna pilarka szablasta do rur  
5-6 Uniwersalna elektryczna pilarka szablasta do rur  
7 Uniwersalna akumulatorowa pilarka szablasta do rur  
Instrukcja obsługi – Przeczytać przed użyciem!

ces 1-3 Elektrická šavlová pila na trubky  
4 Pneumatická šavlová pila  
5-6 Elektrická univerzální šavlová pila  
7 Akumulátorová univerzální šavlová pila  
Návod k použití – Čtěte před uvedením do provozu!

slk 1-3 Elektrická šabl'ová pila na trubky  
4 Pneumatická šabl'ová pila  
5-6 Elektrická univerzálna šabl'ová pila  
7 Akumulátorová univerzálna šabl'ová pila  
Návod na použitie – Prečítajte pred uvedením do prevádzky!

hun 1-3 Elektromos cső-orrfűrész  
4 Pneumatikus cső-orrfűrész  
5-6 Elektromos univerzális orrfűrész  
7 Akumulátoros univerzális orrfűrész  
Üzemeltetési leírás – Használat előtt olvassa el!

hrv/scg 1-3 Električna cijevna sabljasta pila  
4 Pneumatska cijevna sabljasta pila  
5-6 Električna univerzalna sabljasta pila  
7 Akumulatorska univerzalna sabljasta pila  
Upute za uporabu – Pročitajte prije uporabe uređaja!

slv 1-3 Električna ročna žaga  
4 Pneumatska ročna žaga  
5-6 Električna univerzalna ročna žaga  
7 Akumulatorska univerzalna ročna žaga  
Navodilo za uporabo – Berite pred uporabo!

ron 1-3 Ferăstrău electric pentru țevi  
4 Ferăstrău pneumatic pentru țevi  
5-6 Ferăstrău electric universal  
7 Ferăstrău universal cu acumulator  
Instrucțiuni de operare – Vă rugăm citiți înainte de utilizare!

rus 1-3 Электрическая сабельная пила для труб  
4 Пневматическая сабельная пила для труб  
5-6 Электрическая универсальная сабельная пила  
7 Аккумуляторная универсальная сабельная пила  
Инструкция по эксплуатации – Ознакомьтесь перед вводом в эксплуатацию!

grc 1-3 Ηλεκτρική σπαθόεγα σωλήνων  
4 Πνευματική σπαθόεγα σωλήνων  
5-6 Ηλεκτρική σπαθόεγα γενικής χρήσης  
7 Σπαθόεγα γενικής χρήσης μπαταρίας  
Οδηγίες λειτουργίας – Διαβάστε τις πριν από τη θέση σε λειτουργία!

tur 1-3 Elektrikli Kılıç Boru Testeresi  
4 Pnömatik Kılıç Boru Testeresi  
5-6 Elektrikli Çok Amaçlı Testere  
7 Akülü Çok Amaçlı Testere  
Kullanma Talimatı – Çalıştırmadan önce okuyun!

bul 1-3 Электрически саблен трион за тръби  
4 Пневматичен саблен трион за тръби  
5-6 Электрически универсален саблен трион за тръби  
7 Акумулатор универсален саблен трион за тръби  
Ръководство за експлоатация – Да се прочете преди пускане в действие!

lit 1-3 Elektrinis vamzdžių pjūklas  
4 Pneumatinis vamzdžių pjūklas  
5-6 Universalus elektrinis pjūklas  
7 Universalus akumuliatorinis pjūklas  
Naudojimo instrukcija – Prieš darbo pradžią būtina perskaityti!

lav 1-3 Elektriskais cauruļu zāģis  
4 Pneimatisks cauruļu zāģis  
5-6 Univeršālais elektriskais zāģis  
7 Univeršālais zāģis ar akumulatoru  
Lietošanas instrukcija – Pirms ekspluatācijas uzskāšanas jāizlasa!

est 1-3 Elektriline saabelsaag torude jaoks  
4 Pneumaatiline saabelsaag torude jaoks  
5-6 Elektriline universaal-saabelsaag  
7 Aku-universaal-saabelsaag  
Kasutusjuhend – Lugeda enne tööle asumist!



**Made in Germany**

REMS-WERK  
Maschinen- und Werkzeugfabrik  
Postfach 1631 · D-71306 Waiblingen  
Tel. +49 7151 17 07-0  
Fax +49 7151 17 07-110  
www.rems.de

Fig. 1

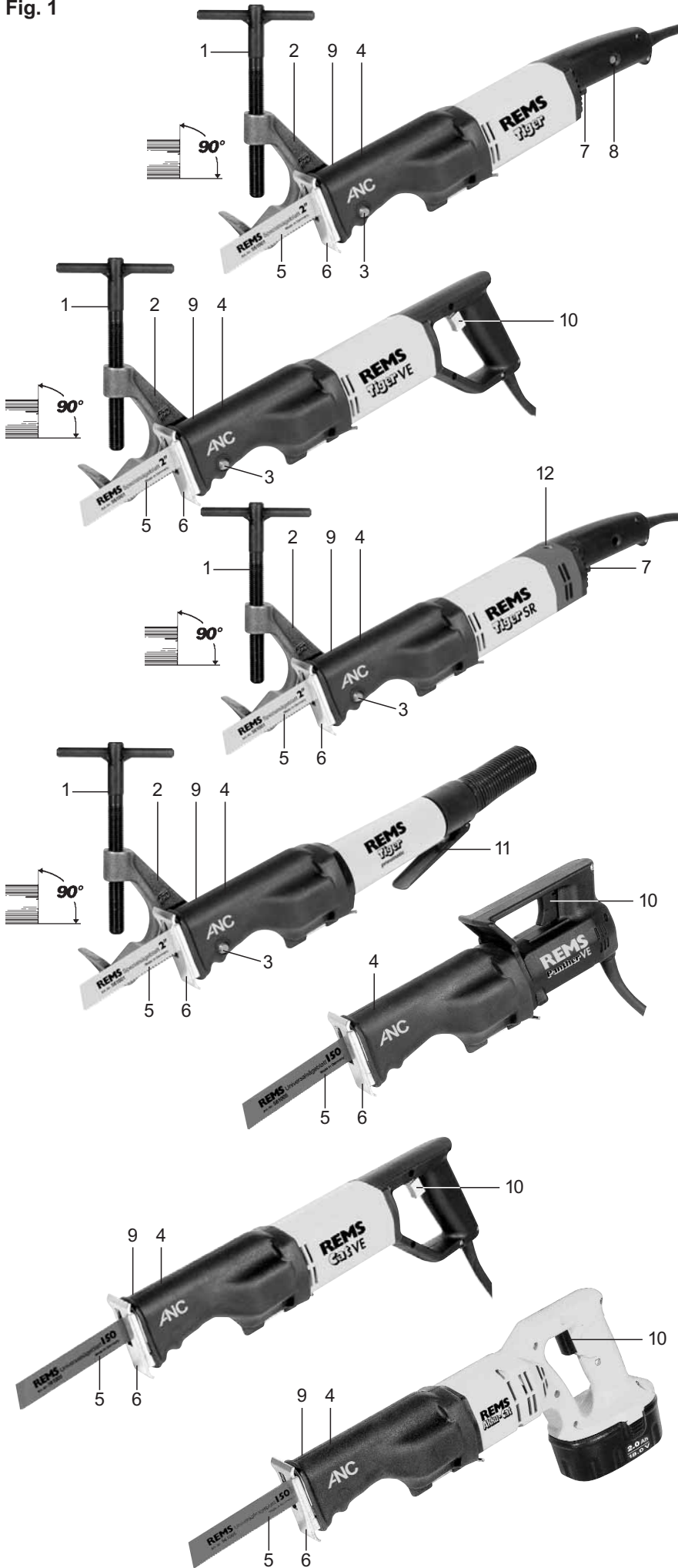


Fig. 2

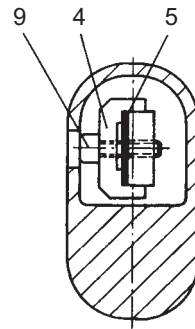


Fig. 3

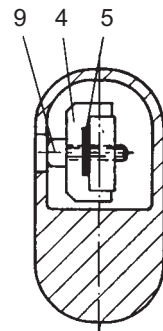
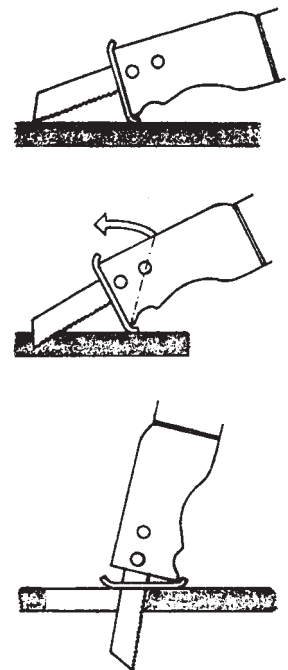


Fig. 4



- Zu geringer Betriebsdruck (REMS Tiger ANC pneumatic).
  - Akku leer (REMS Akku-Cat ANC VE).
- 6.2. Störung: Kein rechtwinkliger Schnitt beim Sägen von Rohren mit Führungshalter.
- Ursache: ● Ungeeignetes Sägeblatt (siehe 2.4.).  
 ● Stumpfes Sägeblatt.  
 ● Prisma des Führungshalters verschmutzt (Späne!).
- 6.3. Störung: Säbelsäge läuft nicht an.
- Ursache: ● Überlastschutz hat ausgelöst (REMS Tiger ANC).  
 ● Anschlussleitung defekt.  
 ● Akku leer (REMS Akku-Cat ANC VE).  
 ● Antriebsmaschine defekt.
- 6.4. Störung: Zentrierstift schert ab, Sägeblatt kann nur ungenügend festgeklemmt werden.
- Ursache: ● Klemmschraube (9) abgenutzt, Innensechskantschlüssel abgenutzt (siehe 2.5.).

## 7. Hersteller-Garantie

Die Garantiezeit beträgt 12 Monate nach Übergabe des Neuproduktes an den Erstverwender, höchstens jedoch 24 Monate nach Auslieferung an den Händler. Der Zeitpunkt der Übergabe ist durch die Einsendung der Original-Kaufunterlagen nachzuweisen, welche die Angaben des Kaufdatums und der Produktbezeichnung enthalten müssen. Alle innerhalb der Garantiezeit auftretenden Funktionsfehler, die nachweisbar auf Fertigungs- oder Materialfehler zurückzuführen sind, werden kostenlos beseitigt. Durch die Mängelbeseitigung wird die Garantiezeit für das Produkt weder verlängert noch erneuert. Schäden, die auf natürliche Abnutzung, unsachgemäße Behandlung oder Missbrauch, Missachtung von Betriebsvorschriften, ungeeignete Betriebsmittel, übermäßige Beanspruchung, zweckfremde Verwendung, eigene oder fremde Eingriffe oder andere Gründe, die REMS nicht zu vertreten hat, zurückzuführen sind, sind von der Garantie ausgeschlossen.

Garantieleistungen dürfen nur von einer autorisierten REMS Vertrags-Kundendienstwerkstatt erbracht werden. Beanstandungen werden nur anerkannt, wenn das Produkt ohne vorherige Eingriffe in unzerlegtem Zustand einer autorisierten REMS Vertrags-Kundendienstwerkstatt eingereicht wird. Ersetzte Produkte und Teile gehen in das Eigentum von REMS über.

Die Kosten für die Hin- und Rückfracht trägt der Verwender.

Die gesetzlichen Rechte des Verwenders, insbesondere seine Mängelansprüche gegenüber dem Händler, bleiben unberührt. Diese Hersteller-Garantie gilt nur für Neuprodukte, welche in der Europäischen Union, in Norwegen oder in der Schweiz gekauft werden.

## 8. REMS Vertrags-Kundendienstwerkstätten

Firmeneigene Fachwerkstatt für Reparaturen:

### SERVICE-CENTER

Neue Rommelshäuser Straße 4

D-71332 Waiblingen

Telefon (0 71 51) 5 68 08 - 60

Telefax (0 71 51) 5 68 08 - 64

Wir holen Ihre Maschinen und Werkzeuge bei Ihnen ab!  
 Nutzen Sie in der Bundesrepublik Deutschland unseren Abholservice.  
 Einfach anrufen unter Telefon (0 71 51) 5 68 08 - 60.

Oder wenden Sie sich an eine andere autorisierte REMS Vertrags-Kundendienstwerkstatt in Ihrer Nähe.

### Fig. 1–3

- |                                      |                            |
|--------------------------------------|----------------------------|
| 1 Clamping screw with locking handle | 6 Support shoe             |
| 2 Guide bracket                      | 7 Switch trigger           |
| 3 Mounting pin                       | 8 Overload protection      |
| 4 Blade thrust piece                 | 9 Clamping screw           |
| 5 Saw blade                          | 10 Speed regulating switch |
|                                      | 11 Lever                   |
|                                      | 12 Dial                    |

## General Safety Rules

**WARNING! To reduce the risk of injury, user must read and understand instruction manual.**

**WARNING!** Read all instructions. Failure to follow all instructions listed below may result in electric shock, fire and/or serious injury. The term „power tool“ in all of the warnings listed below refers to your mains operated (corded) power tool or battery operated (cordless) power tool, also machines and electric units. Only use the power tool for the purpose for which it was intended, with the due attention to the general safety and accident prevention regulations.

SAVE THESE INSTRUCTIONS.

### A) Work area

- a) **Keep work area clean and well lit.** Cluttered and dark areas invite accidents.
- b) **Do not operate power tools in explosive atmospheres, such as in the presence of flammable liquids, gases or dust.** Power tools create sparks which may ignite the dust or fumes.
- c) **Keep children and bystanders away while operating a power tool.** Distractions can cause you to lose control.

### B) Electrical safety

- a) **Power tool plugs must match the outlet. Never modify the plug in any way. Do not use any adapter plugs with earthed (grounded) power tools.** Unmodified plugs and matching outlets will reduce risk of electric shock. If the power tool comes with an earthed wire, the plug may only be connected to an earthed receptacle. At work sites, in damp surroundings, in the open or in the case of comparable types of use, only operate the power tool off the mains using a 30 mA fault current protected switch (FI breaker).
- b) **Avoid body contact with earthed or grounded surfaces such as pipes, radiators, ranges and refrigerators.** There is an increased risk of electric shock if your body is earthed or grounded.
- c) **Do not expose power tools to rain or wet conditions.** Water entering a power tool will increase the risk of electric shock.
- d) **Do not abuse the cord. Never use the cord for carrying, pulling or unplugging the power tool. Keep cord away from heat, oil, sharp edges or moving parts.** Damaged or entangled cords increase the risk of electric shock.
- e) **When operating a power tool outdoors, use an extension cord suitable for outdoor use.** Use of a cord suitable for outdoor use reduces the risk of electric shock.

### C) Personal safety

- a) **Stay alert, watch what you are doing and use common sense when operating a power tool. Do not use a power tool while you are tired or under the influence of drugs, alcohol or medication.** A moment of inattention while operating power tools may result in serious personal injury.
- b) **Use safety equipment. Always wear eye protection.** Safety equipment such as dust mask, non skid safety shoes, hard hat, or hearing protection used for appropriate conditions will reduce personal injuries.
- c) **Avoid accidental starting. Ensure the switch is in the off position before plugging in.** Carrying power tools with your finger on the switch or plugging in power tools that have the switch on invites accidents.
- d) **Remove any adjusting key or wrench before turning the power tool on.** A wrench or a key left attached to a rotating part of the power tool may result in personal injury.
- e) **Do not overreach. Keep proper footing and balance at all times.** This enables better control of the power tool in unexpected situations.
- f) **Dress properly. Do not wear loose clothing or jewellery. Keep your hair, clothing and gloves away from moving parts.** Loose clothes, jewellery or long hair can be caught in moving parts.
- g) **If devices are provided for the connection of dust extraction and collection facilities, ensure these are connected and properly used.** Use of these devices can reduce dust related hazards.
- h) **Only allow trained personnel to use the power tool.** Apprentices may only operate the power tool when they are over 16, when this is necessary for their training and when they are supervised by a trained operative.

**D) Power tool use and care**

- a) **Do not force the power tool. Use the correct power tool for your application.** The correct power tool will do the job better and safer at the rate for which it was designed.
- b) **Do not use the power tool if the switch does not turn it on and off.** Any power tool that cannot be controlled with the switch is dangerous and must be repaired.
- c) **Disconnect the plug from the power source before making any adjustments, changing accessories, or storing power tools.** Such preventive safety measures reduce the risk of starting the power tool accidentally.
- d) **Store idle power tools out of the reach of children and do not allow persons unfamiliar with the power tool or these instructions to operate the power tool.** Power tools are dangerous in the hands of untrained users.
- e) **Maintain power tools. Check for misalignment or binding of moving parts, breakage of parts and any other condition that may affect the power tools operation. If damaged, have the power tool repaired by a qualified expert or by an authorised REMS after-sales service facility before use.** Many accidents are caused by poorly maintained power tools.
- f) **Keep cutting tools sharp and clean.** Properly maintained cutting tools with sharp cutting edges are less likely to bind and are easier to control.
- g) **Secure the workpiece.** Use clamps or a vice to hold the workpiece. This is safer than holding it with your hand, and also it frees both hands to operate the equipment.
- h) **Use the power tool, accessories and tool bits etc., in accordance with these instructions and in the manner intended for the particular type of power tool, taking into account the working conditions and the work to be performed.** Use of the power tool for operations different from those intended could result in a hazardous situation. All unauthorised modifications to the power tool are prohibited for safety reasons.

**E) Battery tool use and care**

- a) **Ensure the switch is in the off position before inserting battery pack.** Inserting the battery pack into power tools that have the switch on invites accidents.
- b) **Recharge only with the charger specified by the manufacturer.** A charger that is suitable for one type of battery may create a risk of fire when used with another battery pack.
- c) **Use battery tools only with specifically designated battery packs.** Use of any other battery packs may create a risk of injury and fire.
- d) **When battery pack is not in use, keep it away from other metal objects like paper clips, coins, keys, nails, screws, or other small metal objects that can make a connection from one terminal to another.** Shorting the battery terminals may cause burns or a fire.
- e) **Under abusive conditions, liquid may be ejected from the battery, avoid contact. If contact accidentally occurs, flush with water. If liquid contacts eyes, additionally seek medical help. Liquid ejected from the battery may cause irritation or burns.**
- f) **Do not use the battery/charger at battery/charger temperatures or ambient temperatures of  $\leq 5^{\circ}\text{C}/40^{\circ}\text{F}$  or  $\geq 40^{\circ}\text{C}/105^{\circ}\text{F}$ .**
- g) **Do not dispose defective batteries in the normal domestic waste. Take them to an authorised REMS after-sales service facility or to a reputed waste disposal company.**

**F) Service**

- a) **Have your power tool serviced by a qualified repair person using only identical replacement parts.** This will ensure that the safety of the power tool is maintained.
- b) **Comply with maintenance instructions and instructions on tool replacements.**
- c) **Check mains lead of power tool regularly and have it replaced by a qualified expert or an authorised REMS after-sales service facility in case of damage. Check extension cable regularly and replace it when damaged.**

**Specific Safety Instructions**

- Use personal safety equipment (e.g. goggles, ear defenders).
- Warning! Chips eject sideways and to the front. Keep other people away.
- Do not overload the saw and the saw blade. Do not use too high feed pressure.
- Watch that no residual water runs into the motor while sawing lines carrying water. Danger: electric shock.
- On dusty work (with materials containing asbestos, stone etc.) comply with the accident prevention regulations.

- Hold power tool by insulated gripping surfaces when performing an operation where the cutting tool may contact hidden wiring or its own cord.
- Contact with a "live" wire will make exposed metal parts of the tool "live" and shock the operator.
- Use clamps or another practical way to secure and support the workpiece to a stable platform. Holding the work by hand or against your body leaves it unstable and may lead to loss of control.

**1. Technical Data****1.1. Article numbers**

REMS Tiger ANC drive unit	560000
REMS Tiger ANC VE drive unit	560008
REMS Tiger ANC SR drive unit	560001
REMS Tiger ANC pneumatic drive unit	560002
REMS Panther ANC VE drive unit	560005
REMS Cat ANC VE drive unit	560004
REMS Akku-Cat ANC VE drive unit	560007
REMS High-Power-Battery 18 V	565210
Rapid-charger 12–18 V	565220

**1.2. Capacities****Square sawing****REMS Tiger ANC, REMS Tiger ANC VE, REMS Tiger ANC SR, REMS Tiger ANC pneumatic**

With guide support 563000 and REMS special saw blade 561001	
Pipes (including plastic coated)	up to 2"
Metal, wood, plaster, etc.	3 mm and thicker

With guide support 563100 and REMS special saw blade 561002	
Pipes (including plastic coated)	up to 4"
Metal, wood, plaster, etc.	3 mm and thicker

REMS Tiger ANC SR with guide support and REMS universal saw blade	
Stainless steel pipes (INOX)	up to 2" or 4"
Metal, wood, plastic	1.5 mm and thicker

**Hand-held sawing****all REMS reciprocating saws**

REMS universal saw blades and REMS saw blades (see 2.4.)	
Steel pipes and others	$\varnothing \leq 6"$ , 160 mm
Other metal profiles, Nail-embedded wood, pallets	$\leq 250$ mm

**1.3. Number of strokes (idling speed)**

REMS Tiger ANC	2200 rpm
REMS Tiger ANC VE (infinitely variable)	0 ... 2200 rpm
REMS Tiger ANC SR (infinitely variable)	700 ... 2200 rpm
REMS Tiger ANC 48 V	1300 rpm
REMS Tiger ANC pneumatic	1800 rpm
REMS Panther ANC VE (infinitely variable)	0 ... 2200 rpm
REMS Cat ANC VE (infinitely variable)	0 ... 2200 rpm
REMS Akku-Cat ANC VE (infinitely variable)	0 ... 1700 rpm

**1.4. Electric data**

REMS Tiger ANC, REMS Tiger ANC VE, REMS Cat ANC VE	230 V; 50–60 Hz; 1050 W; 5 A or 110 V; 50–60 Hz; 1050 W; 10 A or 48 V; 750 W; 16.5 A all-insulated (73/23/EWG) interference-suppressed (89/336/EWG)
REMS Tiger ANC SR	230 V; 50–60 Hz; 1400 W; 6.4 A or 110 V; 50–60 Hz; 1400 W; 12.8 A all-insulated (73/23/EWG) interference-suppressed (89/336/EWG)
REMS Panther ANC VE	230 V; 50–60 Hz; 500 W; 2.3 A or 110 V; 50–60 Hz; 500 W; 4.6 A all-insulated (73/23/EWG) interference-suppressed (89/336/EWG)
REMS Akku-Cat ANC VE	18 V=; 2.0 Ah; 30 A
Rapid-charger (1 h)	Input 230 V~; 50–60 Hz; 1.0 A Output 12–18 V=; 50 W; 2.65 A

## 1.5. Compressed-air supply

### REMS Tiger ANC pneumatic

Required working pressure	6 bar (85 psi)
Air consumption at idling speed	1.6 m <sup>3</sup> /min (56 cf/min)
Air consumption at full speed	1.3 m <sup>3</sup> /min (46 cf/min)
Tube width	12–13 mm (1/2")
Oiler adjustment	6–7 drops/min

## 1.6. Dimensions

REMS Tiger ANC	455×80× 90 mm (17.9"×3.2"×3.5")
REMS Tiger ANC VE	435×80×135 mm (17.1"×3.2"×5.3")
REMS Tiger ANC SR	490×80× 90 mm (19.3"×3.2"×3.5")
REMS Tiger ANC pneumatic	445×80× 90 mm (17.5"×3.2"×3.5")
REMS Panther ANC VE	320×80×110 mm (12.6"×3.2"×4.3")
REMS Cat ANC VE	435×80×135 mm (17.1"×3.2"×5.3")
REMS Akku-Cat ANC VE	435×90×190 mm (17.1"×3.5"×7.5")

## 1.7. Weights

REMS Tiger ANC	3.0 kg (6.6 lb)
REMS Tiger ANC VE	3.0 kg (6.6 lb)
REMS Tiger ANC SR	3.1 kg (6.8 lb)
REMS Tiger ANC pneumatic	3.8 kg (8.4 lb)
REMS Panther ANC VE	2.4 kg (5.3 lb)
REMS Cat ANC VE	3.0 kg (6.6 lb)
REMS Akku-Cat ANC VE (with battery)	3.5 kg (7.7 lb)
REMS High-Power-Battery 18 V	1.0 kg (2.2 lb)
REMS Guide support up to 2"	1.0 kg (2.2 lb)
REMS Guide support 2 1/2–4"	1.7 kg (3.7 lb)

## 1.8. Noise data

Workplace-related emissions	
all REMS reciprocating saws	98 dB(A)
Sound capacity level	
REMS Tiger ANC, REMS Tiger ANC VE, REMS Tiger ANC SR, REMS Panther ANC VE, REMS Cat ANC VE, REMS Akku-Cat ANC VE	104 dB(A)
REMS Tiger ANC pneumatic	107 dB(A)

## 1.9. Vibrations

Weighted effective value of acceleration:	
REMS Tiger, all models with guide support	16.4 m/s <sup>2</sup>
REMS Panther ANC VE, REMS Cat ANC VE, REMS Akku-Cat ANC VE, free-hand	18 m/s <sup>2</sup>
All reciprocating saws idle	22 m/s <sup>2</sup>

## 2. Preparations for Use

### 2.1. Electrical connection

Ensure correct mains voltage! Before connecting the drive unit respectively the rapid charger, check whether voltage on the rating plate matches the mains voltage. At work sites, in damp surroundings, in the open or in case of comparable type of use, only operate the equipment off the mains using a 30mA fault current protected switch (FI breaker).

The battery supplied with REMS Akku-Cat ANC VE as well as spare batteries are not charged. Charge battery before initial operation. Use only REMS rapid-charger (565220) for charging. Once the battery is inserted in the charger, the red indicator lamp at the charger blinks. The indicator lamp lights permanently after about 1 h, i.e. the battery is charged. The battery reaches its full capacity only after several charges.

### 2.2. Sawing with guide support (square cutting)

Insert mounting pin (3) of the guide support (2) sideways into the saw so that the stop pin of the guide support will move in the slot of the machine.

**Attention:** To obtain **square cuts**, the use of the REMS guide support is indispensable. Precise positioning is not possible when saw is guided by hand.

### 2.3. Free hand sawing

The reciprocating saw is used without the guide support (2). It must be pressed forcefully against the material during sawing, in a way that the support shoe (6) touches the material at any time.

### 2.4. Choice of suitable blades

Only use the quality blades of REMS in combination with all REMS reciprocating saws as otherwise any guarantee claim becomes invalid! For getting **right angle cuts** (e.g. pipes) with all REMS Tiger models it is essential not only to use the power transmitting guide support (see 2.2.)

but also the REMS **special** saw blade up to 2" or 4". REMS special saw blades come with a double tang, are extra thick and resistant to bending and distortion. Normal saw blades with single tang do not withstand the high feed pressure during sawing with the guide support. They cut skew and break at the mounting point.

Furthermore, especially with REMS Panther ANC VE, REMS Cat ANC VE and REMS Akku-Cat ANC VE the REMS universal saw blades (561003 ... 561006) should be used. For special operations there are other REMS saw blades available with different forms, lengths and spacings. Please use the blade best suited by size, length and tooth pitch. An unsuitable blade will easily break or become prematurely blunt and will result in inaccurate cuts. For sawing stainless steel pipes and hard cast iron pipes use REMS Tiger ANC SR and one of the REMS universal saw blades 561003 ... 561006.

While sawing excessive dust generating materials, e.g. blaster, breeze blocks, for safety reasons and for protecting the gear against wear, apply dust extractors.

## 2.5. Installing the saw blade

When installing the saw blade, take care **not to place the saw on the anti-kink sleeve** on the mains lead, otherwise the lead may be damaged. Loosen clamping screw (9) on saw blade thrust washer (4) so that the blade can be inserted over the centering pin. The REMS special saw blade must be positioned between the two arms of the U-shaped thrust washer (Fig. 2). REMS saw blades must be positioned in the recess in the base of the thrust washer (Fig. 3). Secure the saw blade **tightly** with clamping screw (9), otherwise the centering pin may become damaged or could shear. The centering pin is not intended to hold the saw blade. This function is performed by the clamping action of clamping screw (9). If this cannot be properly tightened, because the screw socket or socket wrench is worn, the centering pin will shear off. For this reason, replace the clamping screw (9) or socket wrench well before wear becomes excessive.

## 3. Operating

**REMS Tiger ANC:** On/-off with touch control (7).

**REMS Tiger ANC VE, REMS Panther ANC VE, REMS Cat ANC VE and REMS Akku-Cat ANC VE:** Stepless speed control by pressing switch (10).

**REMS Tiger ANC SR:** Speed adjustment with dial (12). On/off switching with tip switch (7).

**REMS Tiger ANC pneumatic:** In order to release the safety catch (approved by TÜV) first pull the lever (11) sideways and then press the lever down.

### 3.1. Operation while sawing with guide support

Mount guide support as described under 2.2. Position saw with guide support onto the pipe so that the clamp spindle is vertical. Press tip switch (7 or 10) while holding the motor handle at the same time, respectively press lever (11), and pull up saw until pipe or rod is cut through. Start-sawing, especially at large diameters (e.g. 4"), can be improved by not switching the motor on before the saw blade touches the pipe. Note that the prism of the guide support is to be kept clean all the time, otherwise square cutting will be effected. For obtaining optimum stroke speed and for protecting the saw blade, only apply moderate feed forward. High force does not make sawing faster!

### 3.2. Operation while sawing free-hand

For straight or curved cutting, press support shoe (6) forcefully against the material in a way that the support shoe (6) touches the material at any time. Switch machine on. Use only sharp and faultless blades. Take care to cut at a uniform feeding speed. This will reduce the risk of accidents and wear on tool and blade. Always keep the power cable towards the rear of the machine.

**Plunge cutting** into a plain surface: If the material is not too hard e.g. wood or plasterboards, the saw blade in motion can be plunged carefully into the material (see Fig. 4). Before switching on machine place tip of saw on the cutting point with machine resting on the lower edge of support shoe. Switch on saw and plunge blade carefully into material. For hard material such as metal first drill a starting hole according to the size of the saw blade. It is important to press the support shoe (6) firmly against the material to be cut in order to obtain a uniform and smooth cutting operation.

### 3.3. Lubricants

Do not use any lubricants. They will prevent the ejection of chips from the cutting point and will reduce the life of the saw blades.

### 3.4. Stainless steel pipes, hard cast iron pipes

For sawing stainless steel pipes and hard cast iron pipes use REMS Tiger ANC SR and one of the REMS universal saw blades 561003 ... 561006. For square cutting the guide support is essential (see 2.2.). Only when cutting stainless steel, use REMS Spezial or REMS Sanitol for cooling and lubricating.

## 4. Maintenance

Before any repair work, pull the mains plug or remove the battery!

### 4.1. Maintenance

The REMS reciprocating saws are maintenance free. The gear runs in a sealed grease housing and therefore does not need any lubrication.

# Be sure to buy the right saw blade first time.

The right choice will save you expense and trouble.

### REMS special saw blade 2"/4"

Specially developed for REMS Tiger ANC. Absolutely essential for right angle sawing and for fast dismantling with power transmitting guide support. This results in multiple sawing pressure through 5-fold power transmitting leverage effect. Normal saw blades with single tang do not withstand the high feed pressure during sawing with guide support, they break at the mounting point. For this reason, extra thick REMS special saw blade, resistant to bending and distortion. Double tang mounting with exceptionally wide clamping face ensures accurate seating and high stability. Coarse, corrugated tooth pattern for rapid sawing. Long service life.

### REMS universal saw blade 100/150/200/300




For free-hand sawing and for sawing with power transmitting guide support. Only 1 universal saw blade instead of many different saw blades. Resilient material, highly flexible, also for flush-to-wall sawing. Double tang mounting with exceptionally wide clamping face for accurate seating and high stability. Normal saw blades with single tang do not withstand the high feed pressure during sawing with guide support, they break at the mounting point. Alternating tooth pattern (combo-toothing), specially hardened in the toothing area. Thus outstanding cutting performance and prolonged service life. Also for hard-to-machine materials, e.g. stainless steel pipes, hard cast iron pipes, etc., and for sawing nail-embedded wood, pallets.

### 1. For REMS Tiger ANC, REMS Tiger ANC VE, REMS Tiger ANC SR,

REMS Tiger ANC pneumatic and other brands.

REMS special saw blade (yellow)

for right angle sawing and for fast dismantling with power transmitting guide support.


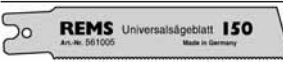


		Lenght mm	Tooth pitch mm	Material	Colour	Art. no. (pack of 5)
	<b>REMS special saw blade 2"</b> for steel pipes up to 2"	140	2,5	HSS-Bi	yellow	561007
	<b>REMS special saw blade 2"</b> for steel pipes up to 2"	140	3,2	HSS-Bi	yellow	561001
	<b>REMS special saw blade 4"</b> for steel pipes up to 4"	200	3,2	HSS-Bi	yellow	561002

For hard-to-machine materials, e.g. stainless steel pipes, hard cast iron pipes, use the finer toothed REMS universal saw blade instead of the REMS special saw blade in combination with REMS Tiger ANC SR with electronic speed regulation.

### 2. For all REMS reciprocating saws and other brands.

REMS universal saw blade (red)


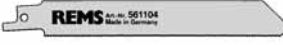



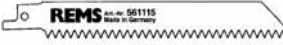
for free-hand sawing and for sawing with power transmitting guide support.

	<b>REMS universal saw blade 100</b>	100	1,8/2,5	HSS-Bi	red	561006
	<b>REMS universal saw blade 150</b>	150	1,8/2,5	HSS-Bi	red	561005
	<b>REMS universal saw blade 200</b>	200	1,8/2,5	HSS-Bi	red	561003
	<b>REMS universal saw blade 300</b>	300	1,8/2,5	HSS-Bi	red	561004

Also for nail-embedded wood, pallets. For hard-to-machine materials, e.g. stainless steel pipes, hard cast iron pipes, lower speed required e.g. by using REMS Tiger ANC SR with electronic speed regulation.

### 3. For all REMS reciprocating saws and other brands.

REMS saw blades – for free hand sawing for different purposes.

	<b>REMS saw blade</b> Metals 3 mm and thicker	100 150 200	1,8 1,8 1,8	HSS-Bi HSS-Bi HSS-Bi	red red red	561101 561103 561102
	<b>REMS saw blade</b> Metals 1–3 mm	150	1,4	HSS-Bi	red	561104
	<b>REMS saw blade</b> Metals 1–3 mm (for curved cuts)	90	1,4	HSS-Bi	red	561107
	<b>REMS saw blade</b> Metals 4 mm and thicker, nail-embedded wood, pallets	150	2,5	HSS-Bi	black	561110
	<b>REMS saw blade</b> All types of wood	300	4	WS	black	561111
	<b>REMS saw blade</b> Plasterboards, breeze blocks etc.	150	5	WS	white	561115

#### 4.2. Inspection/Service

Before any repair work, pull the mains plug or remove the battery! This work may only be performed by authorised experts or by trained personnel.

The REMS reciprocating saws with universal motor have carbon brushes. These are subject to wear and must therefore be inspected or replaced from time to time by an authorised REMS after-sales service facility. See also section 6. Action in case of trouble.

### 5. Wiring

On REMS Akku-Cat ANC VE, make sure that the positive pole of the motor (connector piece on plastic base with nose) is connected with the red wire to the switch clip 1. The rotation lever at the switch has to be set to the rear (towards the mounting surface of the cooling block).

### 6. Action in Case of Trouble

6.1. Trouble: Reciprocating saw comes to a stop during cutting, overload protection activated (REMS Tiger ANC).

- Cause:
- Feeding pressure too high.
  - Blunt saw blade.
  - Unsuitable saw blade (see 2.4.).
  - Worn carbon brushes.
  - Insufficient operating pressure (Tiger ANC pneumatic).
  - Battery empty (REMS Akku-Cat ANC VE).

6.2. Trouble: Does not cut square on pipes with guide support.

- Cause:
- Unsuitable saw blade (see 2.4.).
  - Blunt saw blade.
  - Prism of guide support dirty (chips!).

6.3. Trouble: Reciprocating saw does not start.

- Cause:
- Overload protection has activated (REMS Tiger ANC).
  - Defective power cable.
  - Battery empty (REMS Akku-Cat ANC VE).
  - Defective drive unit.

6.4. Trouble: Centering pin shears off, saw blade cannot be adequately clamped.

- Cause:
- Clamping screw (9) worn, socket wrench worn (see 2.5).

### 7. Manufacturer's Warranty

The warranty period shall be 12 months from delivery of the new product to the first user but shall be a maximum of 24 months after delivery to the Dealer. The date of delivery shall be documented by the submission of the original purchase documents, which must include the date of purchase and the designation of the product. All functional defects occurring within the warranty period, which clearly the consequence of defects in production or materials, will be remedied free of charge. The remedy of defects shall not extend or renew the guarantee period for the product. Damage attributable to natural wear and tear, incorrect treatment or misuse, failure to observe the operational instructions, unsuitable operating materials, excessive demand, use for unauthorized purposes, interventions by the Customer or a third party or other reasons, for which REMS is not responsible, shall be excluded from the warranty.

Services under the warranty may only be provided by customer service stations authorized for this purpose by REMS. Complaints will only be accepted if the product is returned to a customer service station authorized by REMS without prior interference in an unassembled condition. Replaced products and parts shall become the property of REMS.

The user shall be responsible for the cost of shipping and returning the product.

The legal rights of users, in particular the right to claim damages from the Dealer, shall not be affected. This manufacturer's warranty shall apply only to new products purchased in the European Union, in Norway or Switzerland.

#### Fig. 1–3

- |                               |                             |
|-------------------------------|-----------------------------|
| 1 Vis de serrage avec poignée | 7 Interrupteur de commande  |
| 2 Support de guidage          | 8 Disjoncteur de protection |
| 3 Palier                      | 9 Vis de fixation           |
| 4 Serre-lame                  | 10 Interrupteur variateur   |
| 5 Lame de scie                | 11 Levier                   |
| 6 Pied d'appui                | 12 Molette de réglage       |

### Remarques générales pour la sécurité

**ATTENTION!** Toutes les directives doivent être lues. Le non-respect des directives énumérées ci-après peuvent entraîner une décharge électrique, des brûlures, et/ou des graves blessures. Le terme utilisé ci-après „appareil électrique“ se réfère aux outils électriques sur secteur (avec câble de réseau), aux outils électriques sur accu (sans câble de réseau), aux machines et aux outils électriques. N'utiliser l'appareil que pour accomplir les tâches pour lesquelles il a été spécialement conçu et conformément aux prescriptions relatives à la sécurité du travail et à la prévention des accidents.

CONSERVER PRECIEUSEMENT CES DIRECTIVES.

#### A) Poste de travail

- a) **Maintenir le poste de travail propre et rangé.** Le désordre et un poste de travail non éclairé peut être source d'accident.
- b) **Ne pas travailler avec l'appareil électrique dans un milieu où il existe un risque d'explosion, notamment en présence de liquides, de gaz ou de poussières inflammables.** Les appareils électriques produisent des étincelles, qui peuvent mettre le feu à la poussière ou aux vapeurs.
- c) **Tenir les enfants et des tierces personnes à l'écart pendant l'utilisation de l'appareil électrique.** Il y a un risque de perte de contrôle de la machine en cas de distraction.

#### B) Sécurité électrique

- a) **La fiche mâle de l'appareil électrique doit être appropriée à la prise de courant. La fiche mâle ne doit en aucun cas être modifiée. Ne pas utiliser d'adaptateur de fiche mâle avec un appareil électrique avec mise à la terre.** Des fiches mâles non modifiées et des prises de courant appropriées réduisent le risque d'une décharge électrique. Si l'appareil est doté d'un conducteur de protection, ne brancher la fiche mâle que sur une prise de courant avec mise à la terre. Sur chantier, en plein air ou sur un autre mode d'installation, n'utiliser l'appareil électrique qu'avec un dispositif de protection à courant de défaut de 30 mA (déclencheur par courant de défaut) sur réseau.
- b) **Eviter le contact avec des surfaces avec mise à la terre, comme les tubes, radiateurs, cuisinières et réfrigérateurs.** Il y a un risque élevé de décharge électrique lorsque le corps est en contact avec la terre.
- c) **Tenir l'appareil électrique à l'écart de la pluie ou de milieux humides.** La pénétration d'eau dans un appareil électrique augmente le risque de décharge électrique.
- d) **Ne pas utiliser le câble pour des fins auxquelles il n'a pas été prévu, notamment pour porter l'appareil, l'accrocher ou pour débrancher l'appareil en tirant sur la fiche mâle. Tenir le câble éloigné de la chaleur, de l'huile, des angles vifs et des pièces de l'appareil en mouvement.** Des câbles endommagés ou emmêlés augmentent le risque d'une décharge électrique.
- e) **Si vous travaillez avec l'appareil électrique à l'extérieur, n'utiliser que des rallonges autorisées pour les travaux à l'extérieur.** L'utilisation d'une rallonge appropriée pour l'extérieur réduit le risque d'une décharge électrique.

#### C) Sécurité des personnes

- a) **Etre attentif, veiller à ce que l'on fait et se mettre au travail avec bon sens si l'on utilise un appareil électrique. Ne pas utiliser l'appareil électrique en étant fatigué ou en étant sous l'influence de drogues, d'alcools ou de médicaments.** Un moment d'inattention lors de l'utilisation de l'appareil peut entraîner de sérieuses blessures.
- b) **Porter des équipements de protection personnels et toujours des lunettes de protection.** Le port d'équipements de protection personnels, comme un masque respiratoire, des chaussures de sécurité anti-dérapantes, un casque de protection ou une protection acoustique selon le type de l'utilisation de l'appareil électrique, réduit le risque de blessures.
- c) **Eviter toute utilisation involontaire ou incontrôlée. Veiller à ce que l'interrupteur soit en position „O“ avant l'enfichage sur la prise de courant.** Porter un appareil électrique avec le doigt sur l'interrupteur ou

**Teileverzeichnis**

Aktueller Stand  
siehe [www.rems.de](http://www.rems.de)

**Spare parts list**

Latest version  
see [www.rems.de](http://www.rems.de)

**Liste des pièces**

Situation actuelle  
voir [www.rems.de](http://www.rems.de)

**Elenco dei pezzi**

Ultimo aggiornamento  
vedi [www.rems.de](http://www.rems.de)

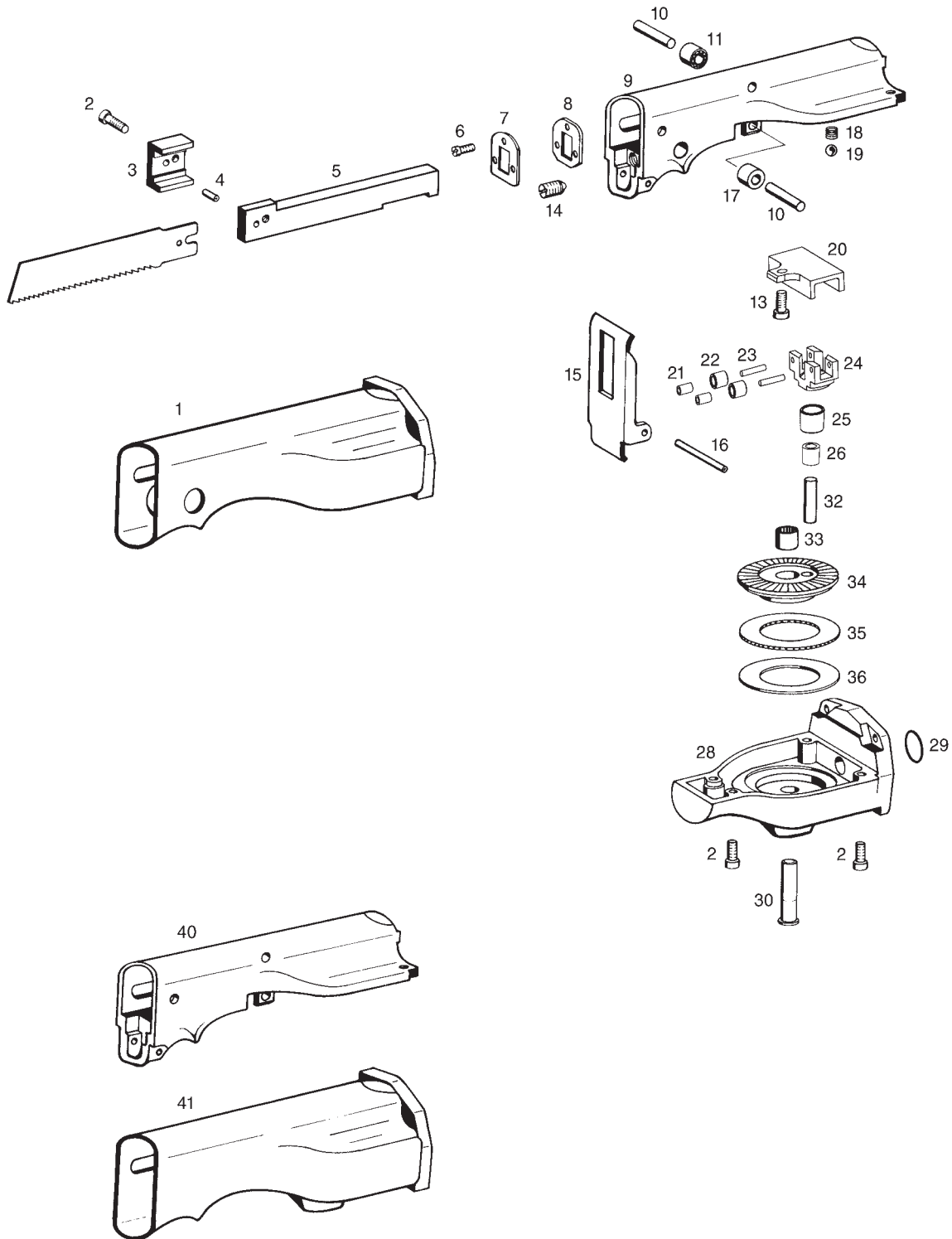
**REMS Tiger ANC / REMS Tiger ANC VE / REMS Tiger ANC SR / REMS Tiger ANC pneumatic  
REMS Panther ANC VE / REMS Cat ANC VE / REMS Akku-Cat ANC**

deu Getriebe

eng Gear

fra Engrenage

ita Ingranaggio



<b>Teileverzeichnis</b> Aktueller Stand siehe www.rems.de	<b>Spare parts list</b> Latest version see www.rems.de	<b>Liste des pièces</b> Situation actuelle voir www.rems.de	<b>Elenco dei pezzi</b> Ultimo aggiornamento vedi www.rems.de
---	--	---	---

**REMS Tiger ANC / REMS Tiger ANC VE / REMS Tiger ANC SR / REMS Tiger ANC pneumatic  
REMS Panther ANC VE / REMS Cat ANC VE / REMS Akku-Cat ANC**

	<b>deu Getriebe</b>	<b>eng Gear</b>	<b>fra Engrenage</b>	<b>ita Ingranaggio</b>	
2	Zylinderschraube	Filister head screw	Vis à tête cylindrique	Vite a testa cilindrica	081116
—	Druckstück mit Stift Pos. 3 und 4	Thrust piece with pin Pos. 3 and 4	Bloc de pression avec rivet Pos. 3 et 4	Blocco di spinta con perno Pos. 3 e 4	562111R
4	Spiralspannstift (10er-Pack)	Spiral pin (pack of 10)	Goupille élastique (en paquet de 10)	Spina elastica (conf. 10 pezzi)	562022R
5	Hubstange	Lift rod	Coulisseau	Biella	562105R
6	Linsenschraube	Filister head screw	Vis tête fraisée bombée	Vite a testa svasata con perno	083134
7	Blende	Protection plate	Tôle de protection	Lamiera di protezione	562011R
8	Dichtung	Gasket	Joint	Guarnizione	562012
10	Zylinderstift	Straight pin	Tige cylindrique	Spina cilindrica	088111
11	Nadellager	Needle bearing	Roulement à aiguilles	Cuscinetto a rullini	057084
13	Zylinderschraube	Filister head screw	Vis à tête cylindrique	Vite a testa cilindrica	081007
15	Stütزشuh	Supporting shoe	Pied d'appui	Scarpa	562014R
16	Spiralspannstift	Spiral pin	Goupille élastique	Spina elastica	088121
17	Gleitrolle	Sliding roller	Galet coulissant	Rullo scorrevole	562015
18	Druckfeder	Pressure spring	Ressort de compression	Molla di compressione	562009
19	Stahlkugel	Steel ball	Bille d'acier	Sfera di acciaio	057048
20	Rollenführung	Roller guide	Guidage à rouleaux	Guida rulli	562106R
—	Nadellager mit Achse und Hülse Pos. 21, 22 und 23	Needle bearing with axle and sleeve Pos. 21, 22 and 23	Roulement à aiguilles avec axe et douille Pos. 21, 22 et 23	Cuscinetto a rullini con asse e corpo filettato Pos. 21, 22 e 23	562125
—	Rollenhalter mont. Pos. 21–24	Roller holder mounted Pos. 21–24	Support galets monté Pos. 21–24	Portarulli montato Pos. 21–24	562114
25	Außenring	Outer ring	Bague extérieure	Anello esterno	562109
26	Nadelhülse	Needle bushing	Douille à aiguilles	Astuccio a rullini	057154
—	Getriebeteil 1 mit Achse, Pos. 28 und 30	Gearbox casing 1 with axle, Pos. 28 and 30	Coquille d'engrenage 1 avec axe, Pos. 28 et 30	Gruppo scatola trasmissione 1 con perno, Pos. 28 e 30	562025
29	O-Ring	O-ring	Joint torique	Guarnizione O-Ring	060109
—	Kegelrad kompl. Pos. 32, 33 und 34	Bevel gear compl. Pos. 32, 33 and 34	Engrenage conique compl. Pos. 32, 33 et 34	Ingranaggio conico compl. Pos. 32, 33 e 34	562024R
33	Nadelhülse	Needle bushing	Douille à aiguilles	Astuccio a rullini	057156
35	Axialnadelkranz	Axial needle collar	Cage à aiguilles axiale	Gabbia assiale a rullini	057082
36	Axialscheibe	Axial disk	Rondelle axiale	Ralla intermedia	057083
—	Getriebe kompl.	Gear compl.	Engrenage compl.	Ingranaggio compl.	562000
—	Getriebefett V 130 0,5 kg	Gear flow grease V 130 0.5 kg	Graisse à engrenages V 130 0,5 kg	Grasso ingranaggi V 130 0,5 kg	091012R0,5

**REMS Tiger ANC / REMS Tiger ANC VE / REMS Tiger ANC SR / REMS Tiger ANC pneumatic**

1	Schutzmantel	Protecting cover	Gaine de protection	Manicotto di protezione	562018R
9	Getriebeteil 2	Gearbox casing 2	Coquille d'engrenage 2	Gruppo scatola trasmissione	562003R
14	Federdruckstück	Spring pressure piece	Element d'arrêt à bille	Elemento premente elastico	061011

**REMS Panther ANC VE / REMS Cat ANC VE / REMS Akku-Cat ANC**

40	Getriebeteil 2	Gearbox casing 2	Coquille d'engrenage 2	Gruppo scatola trasmissione 2	562103R
41	Schutzmantel	Protecting cover	Gaine de protection	Manicotto di protezione	562118R
—	Getriebe kompl.	Gear compl.	Engrenage compl.	Ingranaggio compl.	562100

**Teileverzeichnis**

Aktueller Stand  
siehe [www.rems.de](http://www.rems.de)

**Spare parts list**

Latest version  
see [www.rems.de](http://www.rems.de)

**Liste des pièces**

Situation actuelle  
voir [www.rems.de](http://www.rems.de)

**Elenco dei pezzi**

Ultimo aggiornamento  
vedi [www.rems.de](http://www.rems.de)

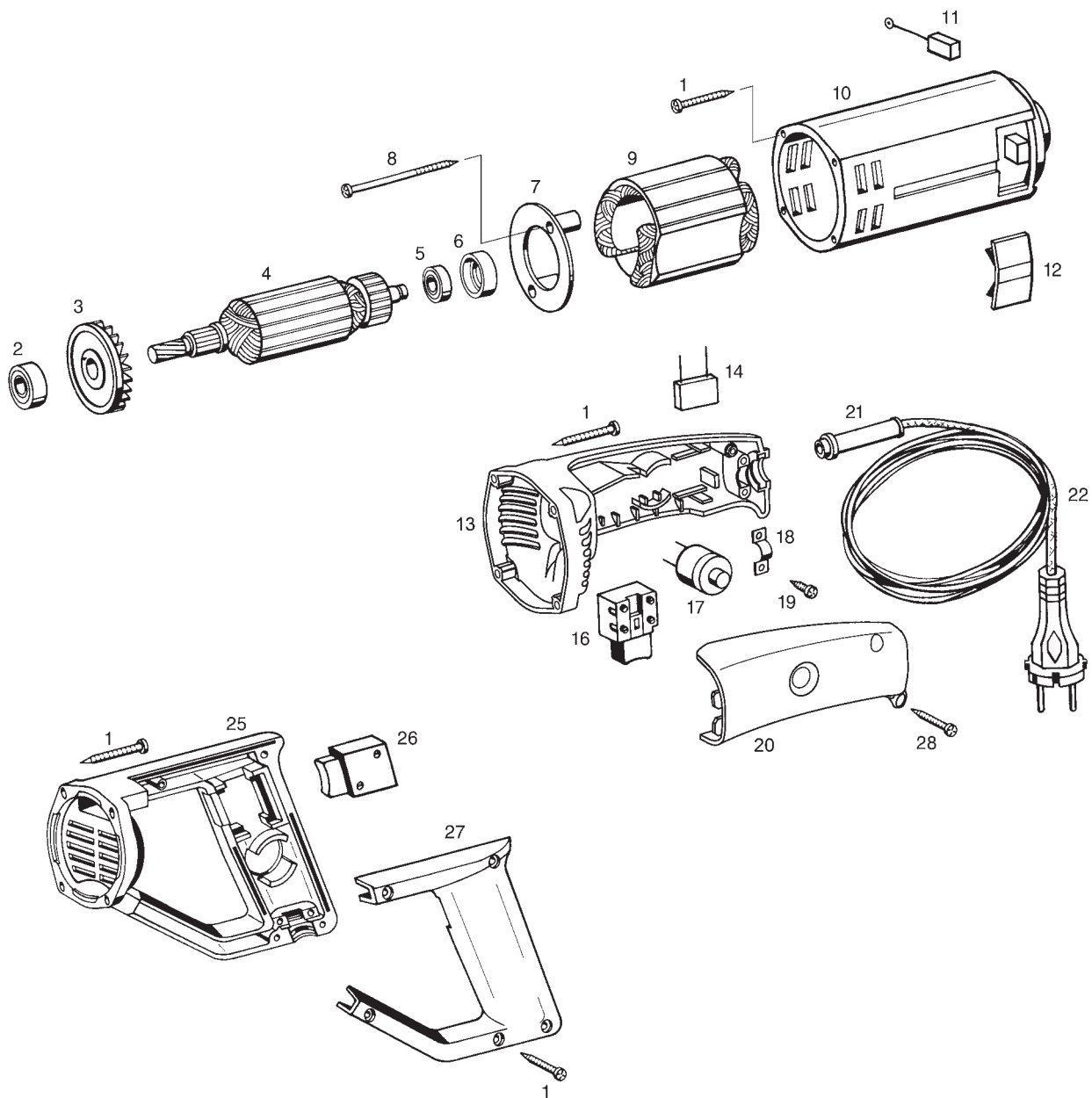
**REMS Tiger ANC / REMS Tiger ANC VE / REMS Cat ANC VE**

deu Motor

eng Motor

fra Moteur

ita Motore



<b>Teileverzeichnis</b> Aktueller Stand siehe <a href="http://www.rems.de">www.rems.de</a>	<b>Spare parts list</b> Latest version see <a href="http://www.rems.de">www.rems.de</a>	<b>Liste des pièces</b> Situation actuelle voir <a href="http://www.rems.de">www.rems.de</a>	<b>Elenco dei pezzi</b> Ultimo aggiornamento vedi <a href="http://www.rems.de">www.rems.de</a>
--	---	--	--

## REMS Tiger ANC / REMS Tiger ANC VE / REMS Cat ANC VE

	deu Motor	eng Motor	fra Moteur	ita Motore	
1	Blechschraube	Sheet metal screw	Vis à tôle	Vite da lamiera	083064
2	Rillenkugellager	Grooved ball bearing	Roulement à billes	Cuscinetto a sfere	057004
3	Lüfter	Ventilator	Ventilateur	Ventilatore	535007
–	Anker mit Lüfter 230 V Pos. 3 und 4	Rotor with ventilator 230 V Pos. 3 and 4	Induit avec ventilateur 230 V Pos. 3 et 4	Indotto con ventilatore 230 V Pos. 3 e 4	565005R220
	Anker mit Lüfter 110 V Pos. 3 und 4	Rotor with ventilator 110 V Pos. 3 and 4	Induit avec ventilateur 110 V Pos. 3 et 4	Indotto con ventilatore 110 V Pos. 3 e 4	565005R110
5	Rillenkugellager	Grooved ball bearing	Roulement à billes	Cuscinetto a sfere	057061
6	Dämmring	Insulating ring	Anneau isolant	Anello isolante	570504
7	Lüfterabdeckung	Ventilator cover	Convercle de ventilateur	Copertura ventilatore	565409R
8	Blechschraube	Sheet metal screw	Vis à tôle	Vite da lamiera	083087
9	Stator 230/240 V	Stator 230/240 V	Stator 230/240 V	Statore 230/240 V	565004R220
	Stator 110 V	Stator 110 V	Stator 110 V	Statore 110 V	565004R110
—	Gehäuse kompl. Pos. 10 und 11	Housing compl. Pos. 10 and 11	Carcasse compl. Pos. 10 et 11	Carcassa compl. Pos. 10 e 11	565025R
11	Kohlebürste (Paar)	Carbon brush (pair)	Balais de charbon (paire)	Carboncini (paio)	535021R
12	Abdeckung	Cover	Couvercle	Coperchio	565003R
14	Kondensator	Capacitor	Condensateur	Condensatore	027006
18	Bride	Strap	Bride	Linguetta	163130
19	Blechschraube	Sheet metal screw	Vis à tôle	Vite da lamiera	083063
21	Biegeschutz	Rubber sleeve	Douille en caoutchouc	Manicotto di protezione	032057
22	Anschlußleitung 230 V	Connecting cable 230 V	Raccordement 230 V	Cavo d'allacciamento 230 V	535037R220
	Anschlußleitung 110 V	Connecting cable 110 V	Raccordement 110 V	Cavo d'allacciamento 110 V	535037R110
	Anschlußleitung CH	Connecting cable CH	Raccordement CH	Cavo d'allacciamento CH	535037RSEV

## REMS Tiger ANC

13	Griff	Handle	Poignée	Impugnatura	565027
16	Schalter 230/240 V	Switch 230/240 V	Interrupteur 230/240 V	Interruttore 230/240 V	023085R220
	Schalter 110 V	Switch 110 V	Interrupteur 110 V	Interruttore 110 V	023085R110
17	Schutzschalter 230/240 V	Protection switch 230/240 V	Interrupteur de protection 230/240 V	Interruttore di protezione 230/240 V	025079R220
	Schutzschalter 110 V	Protection switch 110 V	Interrupteur de protection 110 V	Interruttore di protezione 110 V	025079R110
20	Griffdeckel	Handle cover	Couvercle de poignée	Coperchio d'impugnatura	565028
28	Blechschraube	Sheet metal screw	Vis à tôle	Vite da lamiera	083187

## REMS Tiger ANC VE / REMS Cat ANC VE

25	Griff	Handle	Poignée	Impugnatura	565327
26	Elektronischer Schalter 230 V	Electronic switch 230 V	Interrupteur électronique 230 V	Interruttore elettronico 230 V	023102R220
	Elektronischer Schalter 110 V	Electronic switch 110 V	Interrupteur électronique 110 V	Interruttore elettronico 110 V	023102R110
27	Griffdeckel	Handle cover	Couvercle de poignée	Coperchio d'impugnatura	565328

**Teilverzeichnis**

Aktueller Stand  
siehe www.rems.de

**Spare parts list**

Latest version  
see www.rems.de

**Liste des pièces**

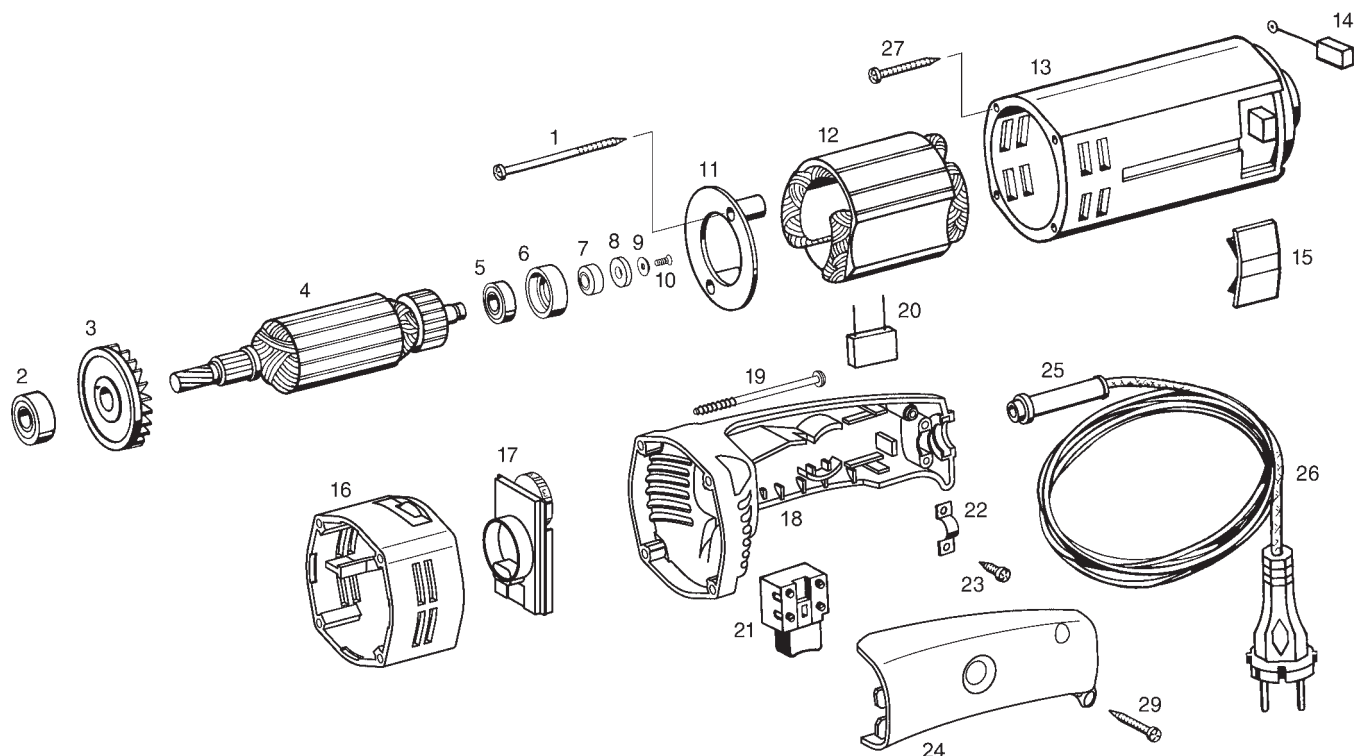
Situation actuelle  
voir www.rems.de

**Elenco dei pezzi**

Ultimo aggiornamento  
vedi www.rems.de

**REMS Tiger ANC SR**

**deu Motor                      eng Motor                      fra Moteur                      ita Motore**



1	Blechschaube	Sheet metal screw	Vis à tôle	Vite da lamiera	083188
2	Rillenkugellager	Grooved ball bearing	Roulement à billes	Cuscinetto a sfere	057004
3	Lüfter	Ventilator	Ventilateur	Ventilatore	535007
–	Anker mit Lüfter 230 V Pos. 3 und 4	Rotor with ventilator 230 V Pos. 3 and 4	Induit avec ventilateur 230 V Pos. 3 et 4	Indotto con ventilatore 230 V Pos. 3 e 4	565405R220
–	Anker mit Lüfter 110 V Pos. 3 und 4	Rotor with ventilator 110 V Pos. 3 and 4	Induit avec ventilateur 110 V Pos. 3 et 4	Indotto con ventilatore 110 V Pos. 3 e 4	565405R110
5	Rillenkugellager	Grooved ball bearing	Roulement à billes	Cuscinetto a sfere	057061
6	Dämmring	Insulating ring	Anneau isolant	Anello isolante	570504
7	Stützring	Supporting ring	Anneau d'appui	Anello d'appoggio	565413
8	Ringmagnet	Ring magnet	Anneau d'aimant	Magnete ad anello	565412
9	Scheibe	Washer	Rondelle	Disco	565411
10	Senkschraube	Countersunk screw	Vis à tête fraisée	Vite a testa svasata	082033
11	Lüfterabdeckung	Ventilator cover	Convercle de ventilateur	Copertura ventilatore	565409R
12	Stator 230/240 V Stator 110 V	Stator 230/240 V Stator 110 V	Stator 230/240 V Stator 110 V	Statore 230/240 V Statore 110 V	565404R220 565404R110
13	Gehäuse kompl.	Housing compl.	Carcasse compl.	Carcassa compl.	565402R
14	Kohlebürste (Paar)	Carbon brush (pair)	Balais de charbon (paire)	Carboncini (paio)	535021R
15	Abdeckung	Cover	Couvercle	Coperchio	565003R
16	Zwischenflansch	Flange intermediate	Flasque intermediaire	Flangia intermedia	565403A
17	Elektronik digital 230 V Elektronik digital 110 V	Electronic digital 230 V Electronic digital 110 V	Électronique digital 230 V Électronique digital 110 V	Elettronica digital 230 V Elettronica digital 110 V	565407R220 565407R110
18	Griff	Handle	Poignée	Impugnatura	565027
19	Blechschaube	Sheet metal screw	Vis à tôle	Vite da lamiera	083183
20	Kondensator	Capacitor	Condensateur	Condensatore	027006
21	Schalter 230/240 V Schalter 110 V	Switch 230/240 V Switch 110 V	Interrupteur 230/240 V Interrupteur 110 V	Interruttore 230/240 V Interruttore 110 V	023085R220 023085R110
22	Bride	Strap	Bride	Linguetta	163130
23	Blechschaube	Sheet metal screw	Vis à tôle	Vite da lamiera	083063
24	Griffdeckel	Handle cover	Couvercle de poignée	Coperchio d'impugnatura	585028
25	Biegeschutz	Rubber sleeve	Douille en caoutchouc	Manicotto di protezione	032057
26	Anschlußleitung 230 V Anschlußleitung 110 V Anschlußleitung CH	Connecting cable 230 V Connecting cable 110 V Connecting cable CH	Raccordement 230 V Raccordement 110 V Raccordement CH	Cavo d'allacciamento 230 V Cavo d'allacciamento 110 V Cavo d'allacciamento CH	535037R220 535037R110 535037RSEV
27	Blechschaube	Sheet metal screw	Vis à tôle	Vite da lamiera	083064
29	Blechschaube	Sheet metal screw	Vis à tôle	Vite da lamiera	083187

**Teileverzeichnis**

Aktueller Stand  
siehe [www.rems.de](http://www.rems.de)

**Spare parts list**

Latest version  
see [www.rems.de](http://www.rems.de)

**Liste des pièces**

Situation actuelle  
voir [www.rems.de](http://www.rems.de)

**Elenco dei pezzi**

Ultimo aggiornamento  
vedi [www.rems.de](http://www.rems.de)

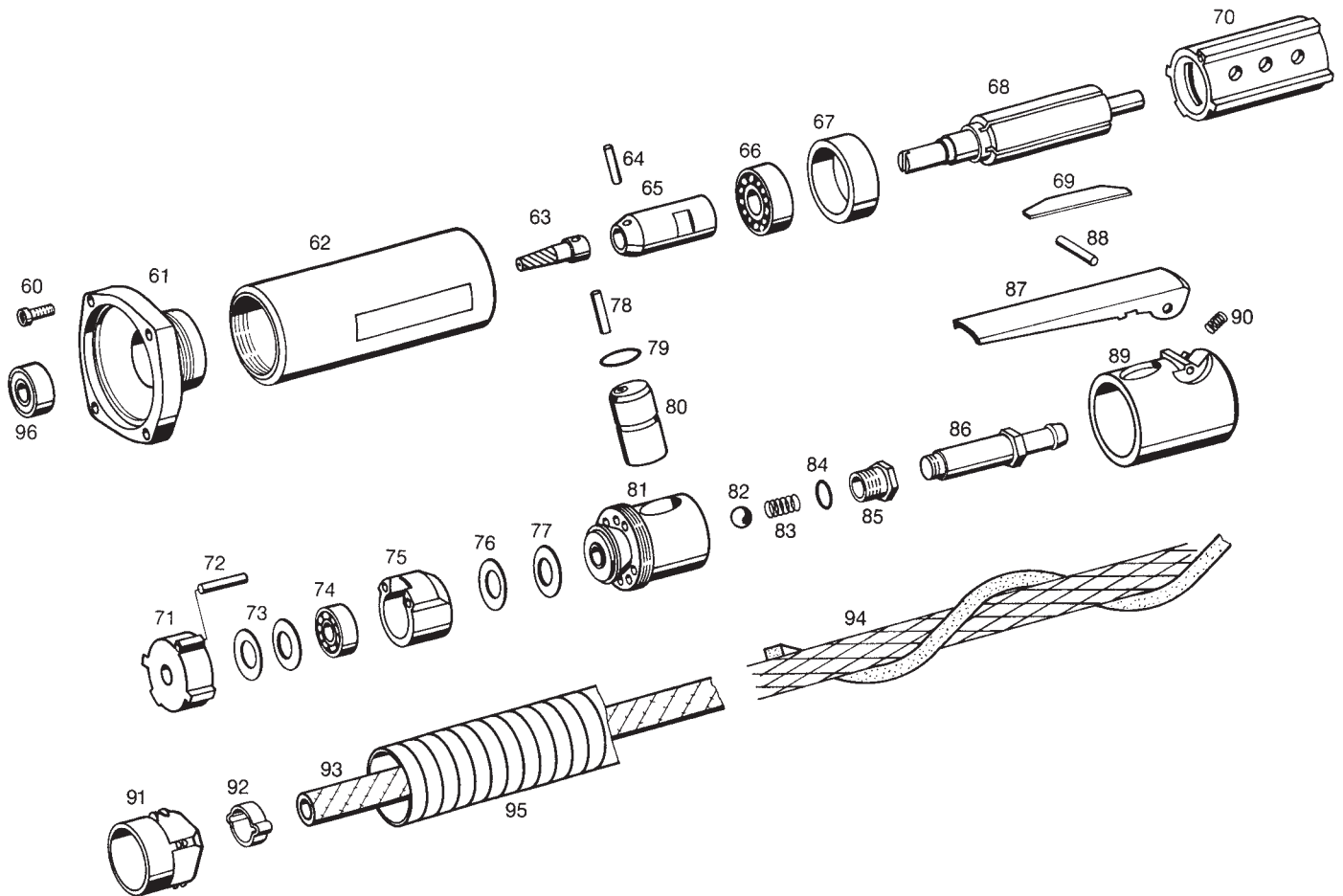
**REMS Tiger ANC pneumatic**

deu Motor

eng Motor

fra Moteur

ita Motore



60	Zylinderschraube	Filister head screw	Vis à tête cylindrique	Vite a testa cilindrica	081112
61	Flansch	Flange	Flasque	Flangia	565130
62	Mantelrohr kompl.	Jacket pipe compl.	Tube à chemise compl.	Tube rivestito completo	565102
—	Ritzel kompl. Pos. 63, 64 und 65	Pinion compl. Pos. 63, 64 and 65	Pignon compl. Pos. 63, 64 et 65	Pignone completo Pos. 63, 64 e 65	565126
66	Rillenkugellager	Grooved ball bearing	Roulement à billes	Cuscinetto a sfere	057012
67	Seitenscheibe	Lateral washer	Rondelle laterale	Ranella laterale	565106
68	Drehkolben	Rotating piston	Piston rotatif à palettes	Pistone rotante	565101
69	Schieber	Slide	Support galets	Cursore	565131
70	Zylinderbüchse	Cylinder bearing	Douille cylindrique	Bolola cilindrica	565107
71	Seitenscheibe	Lateral washer	Rondelle laterale	Ranella laterale	565108
72	Zylinderstift	Straight pin	Tige cylindrique	Spina cilindrica	565110
73	Tellerfeder	Cup spring	Ressort Belleville	Molla a disco	565132
74	Rillenkugellager	Grooved ball bearing	Roulement à billes	Cuscinetto a sfere	057110
75	Verteiler	Distributor	Distributeur	Distributore	565112
76	Paßscheibe	Adjusting washer	Rondelle d'ajustage	Rondelle	565134
77	Paßscheibe	Adjusting washer	Rondelle d'ajustage	Rondelle	565133
78	Zylinderstift	Straight pin	Tige cylindrique	Spina cilindrica	565115
79	O-Ring	O-ring	Joint torique	Guarnizione O-Ring	565114
80	Ventileinsatz kompl.	Valve core compl.	Mechanisme de soupape	Laterna portavalvola	565116
81	Ventilkörper	Valve body	Corps de soupape	Corpo valvola	565113
82	Ventilkugel	Valve ball	Sphere de soupape	Sfera valvola	565135
83	Druckfeder	Pressure spring	Ressort de compression	Molla di compressione	565136
84	O-Ring	O-ring	Joint torique	Guarnizione O-Ring	565137
85	Reduzierstück	Reduction	Reduction	Riduzione	565138
86	Nippel	Nipple	Raccord fileté	Raccordo filettato	565124
87	Hebel	Lever	Levier	Leva	565111
88	Knebelkerbstift	Centre-grooved dowel pin	Goupille cannelée	Spina ad intagli	565121
89	Isolator	Isolator	Isolateur	Isolatore	565120
90	Druckfeder	Pressure spring	Ressort de compression	Molla di compressione	565122
91	Stutzen	Connection piece	Tubulaire	Manicotto	565123
92	Schlauchklemme	Tube clip	Collier pour tuyaux	Serratubo	565143
93	Zuluftschlauch	Air inlet house	Tuyau air ameneu	Tubo mandata aria	565144
94	Schalldämpfer kompl.	Sound absorber compl.	Amortiseur de son compl.	Ammortizzatore di suono compl.	565139
95	Abluftschlauch	Exhaust tube	Tube de sortie d'air	Tubicino di sfato	565145
96	Rillenkugellager	Grooved ball bearing	Roulement à billes	Cuscinetto a sfere	057004

## Teileverzeichnis

Aktueller Stand  
siehe www.rems.de

## Spare parts list

Latest version  
see www.rems.de

## Liste des pièces

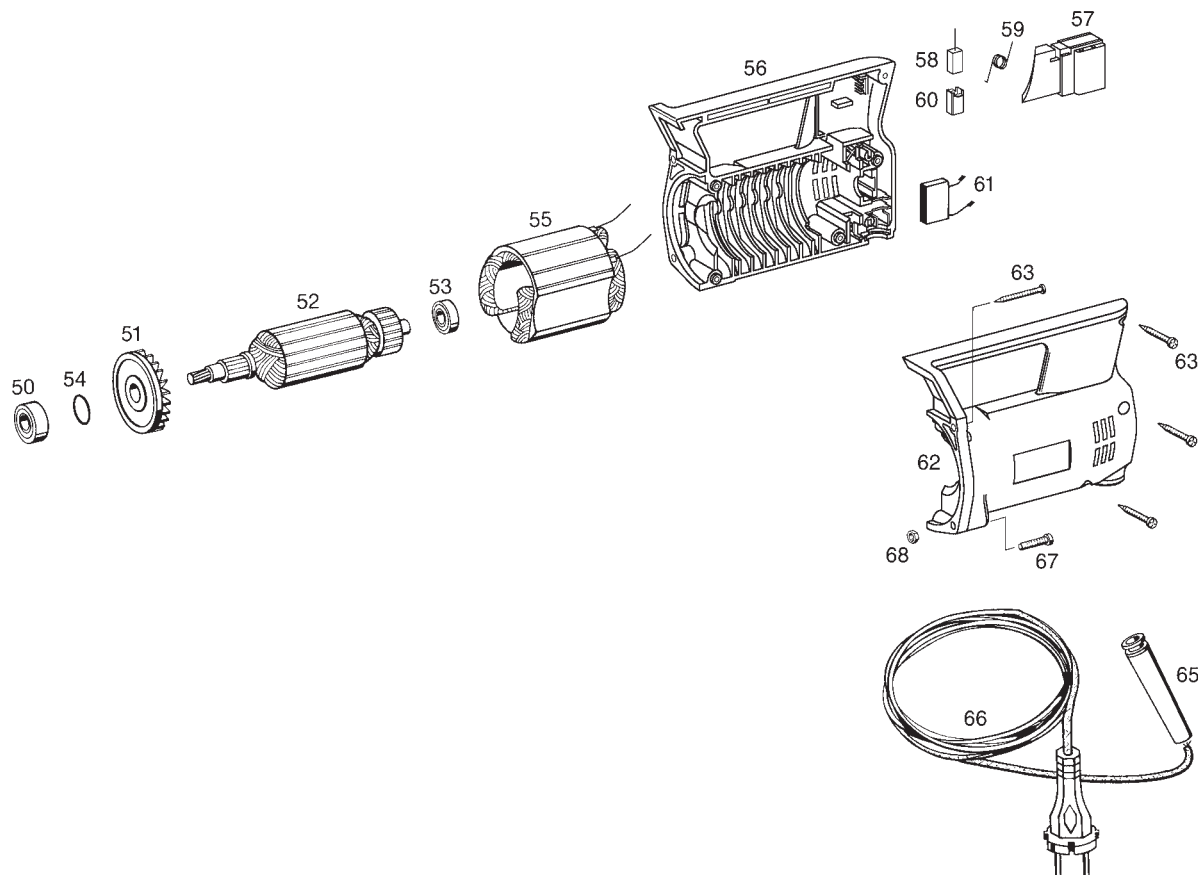
Situation actuelle  
voir www.rems.de

## Elenco dei pezzi

Ultimo aggiornamento  
vedi www.rems.de

### REMS Panther ANC VE

deu Motor      eng Motor      fra Moteur      ita Motore



50	Rillenkugellager	Grooved ball bearing	Roulement à billes	Cuscinetto a sfere	057004
—	Anker mit Lüfter 110 V Pos. 51 und 52	Rotor with ventilator 110 V Pos. 51 and 52	Induit avec ventilateur 110 V Pos. 51 et 52	Indotto con ventilatore 110 V Pos. 51 e 52	565505R110
	Anker mit Lüfter 230 V Pos. 51 und 52	Rotor with ventilator 230 V Pos. 51 and 52	Induit avec ventilateur 230 V Pos. 51 et 52	Indotto con ventilatore 230 V Pos. 51 e 52	565505R220
51	Lüfter	Ventilator	Ventilateur	Ventilatore	572525
53	Rillenkugellager	Grooved ball bearing	Roulement à billes	Cuscinetto a sfere	057162
54	Sprengring	Ring	Bague	Rondella	059112
55	Stator 110 V	Stator 110 V	Stator 110 V	Statore 110 V	565504R110
	Stator 230 V	Stator 230 V	Stator 230 V	Statore 230 V	565504R220
56	Gehäuse-Unterschale	Housing inf. shell	Coquille inférieure carcasse	Calotta inferiore carcassa	572503R
57	Schalter	Switch	Interrupteur	Interruttore	565507
58	Kohlebürsten Paar	Carbon brushes pair	Balais de charbon paire	Carboncini paio	565511R
59	Schenkelfeder	Leg spring	Ressort à branche	Molla	572523
60	Kohleführung	Carbon guide	Guide de charbon	Guida carboncini	572529R
61	Kondensator	Capacitor	Condensateur	Condensatore	027006
62	Gehäuse-Oberschale	Housing upper shell	Coquille supérieure carcasse	Calotta superiore carcassa	572502R
63	Blechschraube	Sheet metal screw	Vis à tôle	Vite da lamiera	083064
65	Biegeschutz	Rubber sleeve	Douille en caoutchouc	Manicotto di protezione	032057
66	Anschlussleitung 110 V	Connecting cable 110 V	Raccordement 110 V	Cavo d'allacciamento 110 V	572527R110
	Anschlussleitung 230 V	Connecting cable 230 V	Raccordement 230 V	Cavo d'allacciamento 230 V	572527R220
	Anschlussleitung CH	Connecting cable CH	Raccordement CH	Cavo d'allacciamento CH	572527RSEV
67	Linsenschraube	Fillister head screw	Vis tête fraisée bombée	Vite a testa svasata con perno	083169
68	Sechskantmutter	Hexagon nut	Ecrou hexagonal	Dado esagonale	085001
—	Motor kompl. 110 V Pos. 50 bis 66	Motor compl. 110 V Pos. 50 – 66	Moteur compl. 110 V Pos. 50 – 66	Motore compl. 110 V Pos. 50 – 66	565500R110
	Motor kompl. 230 V Pos. 50 bis 66	Motor compl. 230 V Pos. 50 – 66	Moteur compl. 230 V Pos. 50 – 66	Motore compl. 230 V Pos. 50 – 66	565500R220
	Motor kompl. CH Pos. 50 bis 66	Motor compl. CH Pos. 50 – 66	Moteur compl. CH Pos. 50 – 66	Motore compl. CH Pos. 50 – 66	565500RSEV

**Teilverzeichnis**

Aktueller Stand  
siehe www.rems.de

**Spare parts list**

Latest version  
see www.rems.de

**Liste des pièces**

Situation actuelle  
voir www.rems.de

**Elenco dei pezzi**

Ultimo aggiornamento  
vedi www.rems.de

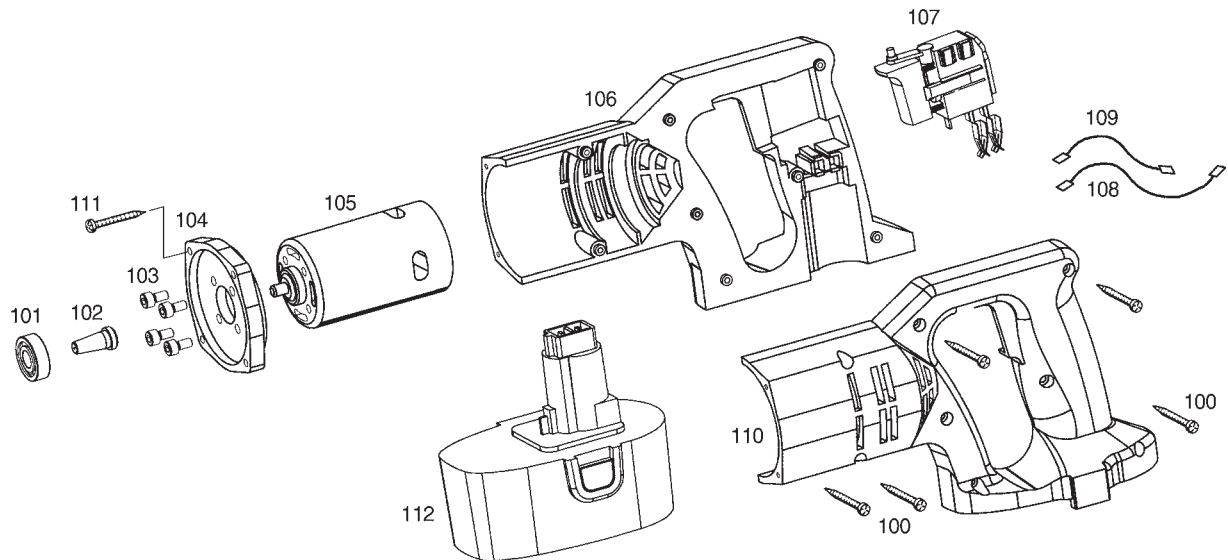
**REMS Akku-Cat ANC**

deu Motor

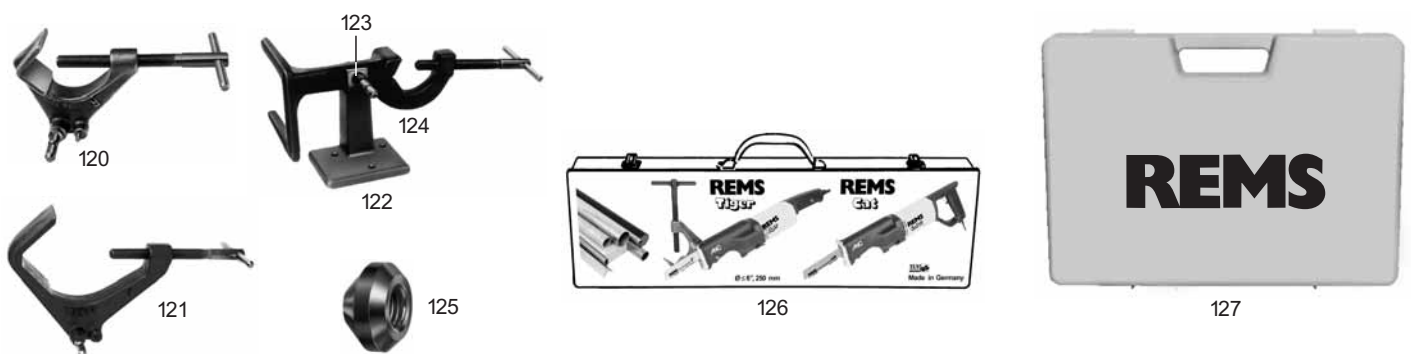
eng Motor

fra Moteur

ita Motore



100	Blechschaube	Sheet metal screw	Vis à tôle	Vite da lamiera	083064
101	Rillenkugellager	Grooved ball bearing	Roulement à billes	Cuscinetto a sfere	057004
—	Motor m. Kegelritzel Pos. 101–105	Motor with conical pinion Pos. 101–105	Moteur avec pignon conique Pos. 101–105	Motore con pignone conico Pos. 101–105	565205
103	Zylinderschraube	Filister head screw	Vis à tête cylindrique	Vite a testa cilindrica	081006
104	Motorflansch	Motor flange	Flasque du moteur	Flangia motore	565255R
106	Gehäuse-Unterschale	Housing-lower shell	Carcasse-coquille inférieure	Carcassa-coppa inferiore	565260R
107	Schalter kompl.	Switch compl.	Interrupteur complète	Interruttore completo	565264R
108	Verbindungsleitung rot	Connection red	Connexion rouge	Cavo rosso	565263
109	Verbindungsleitung schwarz	Connection black	Connexion noir	Cavo nero	565262
110	Gehäuse-Oberschale	Housing-upper shell	Carcasse-coquille supérieure	Carcassa-coppa superiore	565261R
111	Blechschaube	Sheet metal screw	Vis à tôle	Vite da lamiera	083073
112	REMS High-Power-Akku	REMS High-Power-Akku	REMS High-Power-Akku	REMS High-Power-Akku	565210R18

**Zubehör / Accessories / Accessoires / Accessori**

120	Führungshalter bis 2"	Guiding support up to 2"	Support de guidage jusqu'à 2"	Supporto di guida fino a 2"	563000R
121	Führungshalter bis 4"	Guiding support up to 4"	Support de guidage jusqu'à 4"	Supporto di guida fino a 4"	563100R
—	Doppelhalter Pos. 122, 123 und 124	Dual purpose holder Pos. 122, 123 and 124	Support double Pos. 122, 123 et 124	Doppia staffa fermaspunto Pos. 122, 123 e 124	543100
122	Ständer	Support	Chassis	Supporto	543101R
123	Bolzen	Bolt	Axe	Bullone	543102
124	Bügel	Bow	Etrier	Staffa	543105
125	Schutzkappe	Soft material protection cap	Embout de protection	Cappuccio di protezione	563008
126	Stahlblechkasten REMS Tiger/Cat	Steel case REMS Tiger/Cat	Coffret métallique REMS Tiger/Cat	Cassetta metallica REMS Tiger/Cat	566005R
127	Koffer REMS Akku-Cat ANC mit Einlage	Carrying case REMS Akku-Cat ANC with insert	Coffret REMS Akku-Cat ANC avec insertion	Valigetta REMS Akku-Cat ANC con inserto	566025R
—	Einlage	Insert	Insertion	Inserto	566022R

**deu EG-Konformitätserklärung**

REMS-WERK erklärt hiermit, dass die in dieser Betriebsanleitung beschriebenen Maschinen mit den Bestimmungen der Richtlinien 98/37/EG, 89/336/EWG und 73/23/EWG konform sind. Folgende Normen werden entsprechend angewandt: DIN EN ISO 12100-1, DIN EN 12348, DIN EN 50144-1, DIN EN 55014-1, DIN EN 55014-2, DIN EN 60204-1, DIN EN 60335-1, DIN EN 60335-2-45, DIN EN 60745-1, DIN EN 60745-2-9, DIN EN 60745-2-11, DIN EN 61000-3-2, DIN EN 61000-3-3, DIN EN 61029-1, DIN EN 61029-2-9.

**eng EC Declaration of Conformity**

REMS-WERK declares that the products described in this user manual comply with corresponding directives 98/37/EG, 89/336/EWG and 73/23/EWG. Correspondingly this applies to the following norms: DIN EN ISO 12100-1, DIN EN 12348, DIN EN 50144-1, DIN EN 55014-1, DIN EN 55014-2, DIN EN 60204-1, DIN EN 60335-1, DIN EN 60335-2-45, DIN EN 60745-1, DIN EN 60745-2-9, DIN EN 60745-2-11, DIN EN 61000-3-2, DIN EN 61000-3-3, DIN EN 61029-1, DIN EN 61029-2-9.

**fra Déclaration de conformité CEE**

REMS-WERK déclare par la présente, que les machines citées dans cette notice d'utilisation sont conformes aux Directives 98/37/EG, 89/336/EWG et 73/23/EWG. Les normes suivantes ont été appliquées: DIN EN ISO 12100-1, DIN EN 12348, DIN EN 50144-1, DIN EN 55014-1, DIN EN 55014-2, DIN EN 60204-1, DIN EN 60335-1, DIN EN 60335-2-45, DIN EN 60745-1, DIN EN 60745-2-9, DIN EN 60745-2-11, DIN EN 61000-3-2, DIN EN 61000-3-3, DIN EN 61029-1, DIN EN 61029-2-9.

**ita Dichiarazione di conformità CE**

REMS-WERK dichiara che i prodotti descritti in questo manuale sono conformi alle norme 98/37/EG, 89/336/EWG e 73/23/EWG. Le seguenti norme vengono rispettate: DIN EN ISO 12100-1, DIN EN 12348, DIN EN 50144-1, DIN EN 55014-1, DIN EN 55014-2, DIN EN 60204-1, DIN EN 60335-1, DIN EN 60335-2-45, DIN EN 60745-1, DIN EN 60745-2-9, DIN EN 60745-2-11, DIN EN 61000-3-2, DIN EN 61000-3-3, DIN EN 61029-1, DIN EN 61029-2-9.

**spa Declaración CE de conformidad**

REMS-WERK declara que las máquinas descritas en estas instrucciones de manejo son conformes a las normas de las directrices 98/37/EG, 89/336/EWG y 73/23/EWG. Las siguientes normas se aplican respectivamente: DIN EN ISO 12100-1, DIN EN 12348, DIN EN 50144-1, DIN EN 55014-1, DIN EN 55014-2, DIN EN 60204-1, DIN EN 60335-1, DIN EN 60335-2-45, DIN EN 60745-1, DIN EN 60745-2-9, DIN EN 60745-2-11, DIN EN 61000-3-2, DIN EN 61000-3-3, DIN EN 61029-1, DIN EN 61029-2-9.

**nld EG-conformiteitsverklaring**

REMS verklaart hiermee, dat de in de gebruiksaanwijzing beschreven machine met de bestemmingen van de richtlijnen 98/37/EG, 89/336/EWG conform zijn. Volgende normen zijn overeenkomstig gehanteerd: DIN EN ISO 12100-1, DIN EN 12348, DIN EN 50144-1, DIN EN 55014-1, DIN EN 55014-2, DIN EN 60204-1, DIN EN 60335-1, DIN EN 60335-2-45, DIN EN 60745-1, DIN EN 60745-2-9, DIN EN 60745-2-11, DIN EN 61000-3-2, DIN EN 61000-3-3, DIN EN 61029-1, DIN EN 61029-2-9.

**swe EG-försäkran om överensstämmelse**

REMS-WERK försäkrar härmed att de i denna bruksanvisning beskrivna maskinerna överensstämmer med direktiven 98/37/EG, 89/336/EEC och 73/23/EEC. Följande normer tillämpas: DIN EN ISO 12100-1, DIN EN 12348, DIN EN 50144-1, DIN EN 55014-1, DIN EN 55014-2, DIN EN 60204-1, DIN EN 60335-1, DIN EN 60335-2-45, DIN EN 60745-1, DIN EN 60745-2-9, DIN EN 60745-2-11, DIN EN 61000-3-2, DIN EN 61000-3-3, DIN EN 61029-1, DIN EN 61029-2-9.

**nor EC-konformitetserklæring**

REMS-WERK erklærer herved at maskinen som er beskrevet i denne bruksanvisningen, oppfyller bestemmelsene i direktivene 98/37/EC, 89/336/EEC og 73/23/EEC. Følgende standarder er anvendt i denne forbindelse: DIN EN ISO 12100-1, DIN EN 12348, DIN EN 50144-1, DIN EN 55014-1, DIN EN 55014-2, DIN EN 60204-1, DIN EN 60335-1, DIN EN 60335-2-45, DIN EN 60745-1, DIN EN 60745-2-9, DIN EN 60745-2-11, DIN EN 61000-3-2, DIN EN 61000-3-3, DIN EN 61029-1, DIN EN 61029-2-9.

**dan EF-konformitetserklæring**

REMS-WERK erklærer hermed, at de maskiner, som er beskrevet i denne betjeningsvejledning, er konforme med bestemmelserne i direktiverne 98/37/EG, 98/336/EWG og 73/23/EWG. Følgelig anvendes følgende normer: DIN EN ISO 12100-1, DIN EN 12348, DIN EN 50144-1, DIN EN 55014-1, DIN EN 55014-2, DIN EN 60204-1, DIN EN 60335-1, DIN EN 60335-2-45, DIN EN 60745-1, DIN EN 60745-2-9, DIN EN 60745-2-11, DIN EN 61000-3-2, DIN EN 61000-3-3, DIN EN 61029-1, DIN EN 61029-2-9.

**fin EU:n vaatimustenmukaisuusvakuutus**

REMS-WERK vakuuttaa täten, että tässä käyttöohjeessa kuvatut koneet vastaavat EU:n direktiivien 98/37/EY, 89/336/ETY ja 73/23/ETY vaatimuksia. Seuraavia standardeja sovelletaan vastaavasti: DIN EN ISO 12100-1, DIN EN 12348, DIN EN 50144-1, DIN EN 55014-1, DIN EN 55014-2, DIN EN 60204-1, DIN EN 60335-1, DIN EN 60335-2-45, DIN EN 60745-1, DIN EN 60745-2-9, DIN EN 60745-2-11, DIN EN 61000-3-2, DIN EN 61000-3-3, DIN EN 61029-1, DIN EN 61029-2-9.

**por Declaração de conformidade CE**

REMS-WERK declara que as máquinas descritas neste manual de instruções estão conformes com as normas das directrizes 98/37/EG, 89/336/EWG e 73/23/EWG. Também se aplicam as seguintes normas, respectivamente: DIN EN ISO 12100-1, DIN EN 12348, DIN EN 50144-1, DIN EN 55014-1, DIN EN 55014-2, DIN EN 60204-1, DIN EN 60335-1, DIN EN 60335-2-45, DIN EN 60745-1, DIN EN 60745-2-9, DIN EN 60745-2-11, DIN EN 61000-3-2, DIN EN 61000-3-3, DIN EN 61029-1, DIN EN 61029-2-9.

**pol Deklaracja zgodności EWG**

Firma REMS oświadcza, że maszyny opisane w niniejszej instrukcji użytkowania zgodne są z warunkami wytycznych 98/37/EG, 89/336/EWG oraz 73/23/EWG. Zastosowane zostały następujące normy: DIN EN ISO 12100-1, DIN EN 12348, DIN EN 50144-1, DIN EN 55014-1, DIN EN 55014-2, DIN EN 60204-1, DIN EN 60335-1, DIN EN 60335-2-45, DIN EN 60745-1, DIN EN 60745-2-9, DIN EN 60745-2-11, DIN EN 61000-3-2, DIN EN 61000-3-3, DIN EN 61029-1, DIN EN 61029-2-9.

**ces EU-Prhlášení o shodě**

REMS-WERK tímto prohlašuje, že se stroje/přístroje popsané v tomto návodu k použití shodují s ustanoveními směrnice EU 98/37/EG, 89/336/EWG a 73/23/EWG. Odpovídajícím způsobem byly použity následující normy: DIN EN ISO 12100-1, DIN EN 12348, DIN EN 50144-1, DIN EN 55014-1, DIN EN 55014-2, DIN EN 60204-1, DIN EN 60335-1, DIN EN 60335-2-45, DIN EN 60745-1, DIN EN 60745-2-9, DIN EN 60745-2-11, DIN EN 61000-3-2, DIN EN 61000-3-3, DIN EN 61029-1, DIN EN 61029-2-9.

**slk ES-vyhlasenie o zhode**

ZÁVOD REMS-WERK týmto vyhlasuje, že strojea prístroje popísané v tomto prevádzkovom návode sú konformné s ustanoveniami smerníc 98/37/ES, 89/336/EHS a 73/23/EHS. V súlade s tým sa aplikujú nasledujúce normy: DIN EN ISO 12100-1, DIN EN 12348, DIN EN 50144-1, DIN EN 55014-1, DIN EN 55014-2, DIN EN 60204-1, DIN EN 60335-1, DIN EN 60335-2-45, DIN EN 60745-1, DIN EN 60745-2-9, DIN EN 60745-2-11, DIN EN 61000-3-2, DIN EN 61000-3-3, DIN EN 61029-1, DIN EN 61029-2-9.

**hun ES-hasonlósági bizonylat**

A REMS-WERK ÜZEM ezennel kijelenti, hogy az ezen üzemeltetési útmutatóban leírt gépek megfelelnek a 98/37/ES, 89/336/EHS és 73/23/EHS irányzatok követelményeinek. Ezzel összhangban alkalmazandók a következő szabványok: DIN EN ISO 12100-1, DIN EN 12348, DIN EN 50144-1, DIN EN 55014-1, DIN EN 55014-2, DIN EN 60204-1, DIN EN 60335-1, DIN EN 60335-2-45, DIN EN 60745-1, DIN EN 60745-2-9, DIN EN 60745-2-11, DIN EN 61000-3-2, DIN EN 61000-3-3, DIN EN 61029-1, DIN EN 61029-2-9.

**hrv/scg Izjava o sukladnosti EZ**

REMS-WERK ovime izjavljuje da su strojevi opisani u ovim pogonskim uputama sukladni s direktivama EZ-a 98/37/EG, 89/336/EWG i 73/23/EWG. Odgovarajuće se primjenjuju sljedeće norme: DIN EN ISO 12100-1, DIN EN 12348, DIN EN 50144-1, DIN EN 55014-1, DIN EN 55014-2, DIN EN 60204-1, DIN EN 60335-1, DIN EN 60335-2-45, DIN EN 60745-1, DIN EN 60745-2-9, DIN EN 60745-2-11, DIN EN 61000-3-2, DIN EN 61000-3-3, DIN EN 61029-1, DIN EN 61029-2-9.

**slv Izjava o skladnosti EU**

REMS-WERK izjavlja, da so v teh navodilih za uporabo opisani stroji v skladu z določbami smernic 98/37/EG, 89/336/EWG in 73/23/EWG. Odgovarjajoče so bile uporabljane sledeče smernice: DIN EN ISO 12100-1, DIN EN 12348, DIN EN 50144-1, DIN EN 55014-1, DIN EN 55014-2, DIN EN 60204-1, DIN EN 60335-1, DIN EN 60335-2-45, DIN EN 60745-1, DIN EN 60745-2-9, DIN EN 60745-2-11, DIN EN 61000-3-2, DIN EN 61000-3-3, DIN EN 61029-1, DIN EN 61029-2-9.

**ron Declarație de conformitate CE**

REMS-WERK declară prin prezenta că mașinile descrise în aceste instrucțiuni de funcționare sunt conforme cu dispozițiile directivelor 98/37/CE, 89/336/CEE și 73/23/CEE. Următoarele norme sunt aplicate corespunzător: DIN EN ISO 12100-1, DIN EN 12348, DIN EN 50144-1, DIN EN 55014-1, DIN EN 55014-2, DIN EN 60204-1, DIN EN 60335-1, DIN EN 60335-2-45, DIN EN 60745-1, DIN EN 60745-2-9, DIN EN 60745-2-11, DIN EN 61000-3-2, DIN EN 61000-3-3, DIN EN 61029-1, DIN EN 61029-2-9.

**rus Совместимость по EG**

Настоящим фирма REMS-WERK заявляет, что станки и машины, описанные в настоящей инструкции по эксплуатации, совместимы с положениями инструкций 98/37/EG, 89/336/EWG и 73/23/EWG. Применяются соответственно следующие стандарты: DIN EN ISO 12100-1, DIN EN 12348, DIN EN 50144-1, DIN EN 55014-1, DIN EN 55014-2, DIN EN 60204-1, DIN EN 60335-1, DIN EN 60335-2-45, DIN EN 60745-1, DIN EN 60745-2-9, DIN EN 60745-2-11, DIN EN 61000-3-2, DIN EN 61000-3-3, DIN EN 61029-1, DIN EN 61029-2-9.

**grc Διούλυσζ Οχμμςςυζστ ΕΚ**

Η REMS-WERK δηλώνει με το παρόν, ότι οι μηχανές που περιγράφονται στις παρούσες οδηγίες χρήσης συμμορφώνονται προς τις διατάξεις των οδηγιών 98/37/ΕΚ, 89/336/ΕΟΚ και 73/23/ΕΟΚ. Εφαρμόζονται αντίστοιχα τα ακόλουθα πρότυπα: DIN EN ISO 12100-1, DIN EN 12348, DIN EN 50144-1, DIN EN 55014-1, DIN EN 55014-2, DIN EN 60204-1, DIN EN 60335-1, DIN EN 60335-2-45, DIN EN 60745-1, DIN EN 60745-2-9, DIN EN 60745-2-11, DIN EN 61000-3-2, DIN EN 61000-3-3, DIN EN 61029-1, DIN EN 61029-2-9.

**tur Avrupa birliđi - Uyumluluk beyanı**

REMS-Werk bu kullanma kılavuzunda tarif edilen makinelerin 98/37/EG, 89/336/EWG ve 73/23/EWG şartlarına uygun olduğunu beyan etmektedir. Belirtilen Norm'lar kullanılmaktadır: DIN EN ISO 12100-1, DIN EN 12348, DIN EN 50144-1, DIN EN 55014-1, DIN EN 55014-2, DIN EN 60204-1, DIN EN 60335-1, DIN EN 60335-2-45, DIN EN 60745-1, DIN EN 60745-2-9, DIN EN 60745-2-11, DIN EN 61000-3-2, DIN EN 61000-3-3, DIN EN 61029-1, DIN EN 61029-2-9.

**bul Декларация за съответствие на ЕС**

Заводите REMS, декларират, че описаните в тази инструкция за експлоатация продукти съответстват на европейските постановления на директиви 98/37/EG, 89/336/EWG и 73/23/EWG. Последващите стандарти са съответни на: DIN EN ISO 12100-1, DIN EN 12348, DIN EN 50144-1, DIN EN 55014-1, DIN EN 55014-2, DIN EN 60204-1, DIN EN 60335-1, DIN EN 60335-2-45, DIN EN 60745-1, DIN EN 60745-2-9, DIN EN 60745-2-11, DIN EN 61000-3-2, DIN EN 61000-3-3, DIN EN 61029-1, DIN EN 61029-2-9.

**lit EB atitikties deklaracija**

REMS-WERK pareiškia, kad šioje naudojimo instrukcijoje aprašyti įrenginiai atitinka direktyvų 98/37/EG, 89/336/EWG ir 73/23/EWG reikalavimus ir taikomos DIN EN ISO 12100-1, DIN EN 12348, DIN EN 50144-1, DIN EN 55014-1, DIN EN 55014-2, DIN EN 60204-1, DIN EN 60335-1, DIN EN 60335-2-45, DIN EN 60745-1, DIN EN 60745-2-9, DIN EN 60745-2-11, DIN EN 61000-3-2, DIN EN 61000-3-3, DIN EN 61029-1, DIN EN 61029-2-9 normos.

**lav EK atbilstības deklarācija**

REMS-WERK ar šo deklarē, ka instrukcijā aprakstītie izstrādājumi atbilst Eiropas direktīvām 98/37/EG, 89/336/EWG un 73/23/EWG. Tika pielietotas atbilstošās normas: DIN EN ISO 12100-1, DIN EN 12348, DIN EN 50144-1, DIN EN 55014-1, DIN EN 55014-2, DIN EN 60204-1, DIN EN 60335-1, DIN EN 60335-2-45, DIN EN 60745-1, DIN EN 60745-2-9, DIN EN 60745-2-11, DIN EN 61000-3-2, DIN EN 61000-3-3, DIN EN 61029-1, DIN EN 61029-2-9.

**est EL normidele vastavuse deklaratsioon**

REMS-WERK deklareerib, et selles kasutusjuhendis kirjeldatud tooted vastavad 98/37/EG, 89/336/EWG ja 73/23/EWG normidele. Rakendatud normatiivid: DIN EN ISO 12100-1, DIN EN 12348, DIN EN 50144-1, DIN EN 55014-1, DIN EN 55014-2, DIN EN 60204-1, DIN EN 60335-1, DIN EN 60335-2-45, DIN EN 60745-1, DIN EN 60745-2-9, DIN EN 60745-2-11, DIN EN 61000-3-2, DIN EN 61000-3-3, DIN EN 61029-1, DIN EN 61029-2-9.

Waiblingen, den 01.11.2008

**REMS-WERK**

Christian Föll und Söhne GmbH  
Maschinen- und Werkzeugfabrik  
D-71332 Waiblingen



Dipl.-Ing. Hermann Weiß