

❖ Planetary Cutting Technology

RA and RA H

Pipe Cutting and Beveling Machines
RA 2, RA 6, RA 8 and RA 12

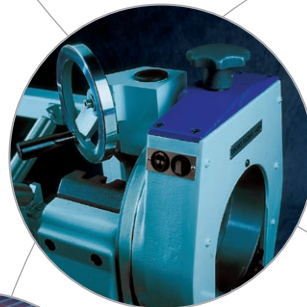
Perform economical cutting and beveling with technology made by Orbitalum Tools!

Advantages:

- Multiple point clamping
- Fast adjustment of dimensions
- Regulated cutting speed
- Optimal tool contact
- Working direction from the inside towards the outside
- Fast tool replacement

Your benefits:

- Square, burr-free and deformation-free pipe end
- Cold machining process
- Cutting in seconds
- Simultaneous or separate cutting and beveling
- Increased productivity
- Improved cutting quality
- Increased service life of tools



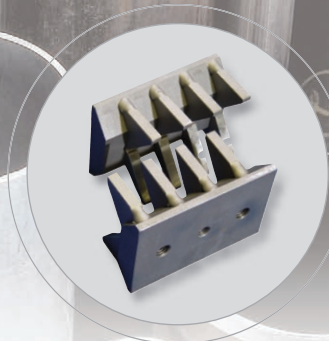
❖ also available with automatic or manual feed module
AVM/MVM



A wide range of **saw blades and bevel cutter** are especially designed for our pipe cutters for highest requirements and longest service life.



High-performance lubricants for pipe cutting and beveling to increase the saw blade life-time. Synthetic saw blade lubricating compound **GF TOP**, Tube, 180 g: Code 790 060 228. Saw blade lubricating compound **ROCOL**, Tube, 150 ml: Code 790 041 016.



Special **stainless steel clamping jaws** for RA 2, RA 21 S: Code 790 041 323. For RA 4: Code 790 042 201. **Aluminum clamping jaws** for RA 4 and RA 41 Plus: Code 790 046 250. Customised **aluminum clamping shells** for RA 6, RA 8, RA 12, GF 4, GF 20, RA 41 Plus: for deformation-free clamping of thin-walled tubes.



Very sturdy and stable **pipe feeder**: feeds accurately long and heavy pipes into RA machines. Base unit: Code 790 068 051. Extension unit: Code 790 068 061

Pipe Cutting and Beveling Machines

Technical data	RA 2 (H)	RA 6 (H)	RA 8 (H)	RA 12 (H)
Weight [kg]*	45 (47)	95 (97)	115 (117)	135 (137)
Power [kW]	1.6	1.6	1.6	1.6
Protection class	Totally insulated in accordance with class II, DIN VDE 0740			
Built-in electronic speed regulation with speed stabilisation [rpm]*	150 - 270 (40 - 70)	150 - 270 (40 - 70)	150 - 270 (40 - 70)	150 - 270 (40 - 70)
Versions	200 - 240 V, 50/60 Hz or 100 - 120 V, 50/60 Hz. Pneumatic drive only on request.			
Vibration level according to EN 28662, part 1 [m/s ²]	2.5	2.5	2.5	2.5
Noise level in the workplace approx. [dB (A)]	75	75	75	75
Working range	RA 2 (H)	RA 6 (H)	RA 8 (H)	RA 12 (H)
Pipe OD [mm]	12 - 63	44** - 182	114 - 230	154 - 325
Pipe OD [inch]	0.472 - 2.480	1.732** - 7.165	4.488 - 9.055	6.063 - 12.795
Wall thickness, depends on material [mm]***	1.5 - 5.5	2 - 10	2 - 10	2 - 10
Wall thickness, depends on material [inch]***	0.059 - 0.217	0.079 - 0.394	0.079 - 0.394	0.079 - 0.394
Pipe ID min. (saw blade-Ø 63 mm) [mm]	7	76	137	185
Pipe ID min. (saw blade-Ø 2.480 inch) [inch]	0.276	2.992	5.394	7.283
Pipe ID min. (saw blade-Ø 68 mm) [mm]	2	71	132	176
Pipe ID min. (saw blade-Ø 2.677 inch) [inch]	0.079	2.795	5.197	6.929
Pipe ID min. (saw blade-Ø 80 mm) [mm]	-	59	120	164
Pipe ID min. (saw blade-Ø 3.150 inch) [inch]	-	2.329	4.724	6.475
Pipe ID min. (saw blade-Ø 100 mm) [mm]	-	39	101	144
Pipe ID min. (saw blade-Ø 3.937 inch) [inch]	-	1.535	3.976	5.669

* Values in brackets for RA H (= with intermediate gear)

** Special clamping jaws must be installed for pipes with an outer diameter (OD) of < 85 mm (3.346 inch). These are already delivered with the RA 6 (H).

*** Depending on the wall thickness special clamping shells for thin-walled tubes are required (accessory)

The technical data are not binding. They are not warranted characteristics and are subject to change. Please consult our general conditions of supply.

Stamp of distributor:

Info-Hotline: +49 (0) 77 31 792-787 up to 789