



**POP-UP PLUS  
ELEVATING WORK PLATFORM**



**OPERATOR'S, SAFETY & MAINTENANCE HANDBOOK**

# POP-UP PLUS+

## OPERATOR'S, SAFETY & MAINTENANCE HANDBOOK

### CONTENTS

			Page
Section 1	DESCRIPTION	Introduction	3
		Description	3
		Intended use	4
		Training	4
		Modifications	4
		Terminology	5
Section 2	SPECIFICATION	Technical data	6
		Operating site	7
		Noise and vibration	7
		Limitations	8
Section 3	SAFETY RULES	Safety Rules	9
Section 4	OPERATING INSTRUCTIONS	Daily checks	11
		Manoeuvring the platform	12
		Engaging the brakes	13
		Deploying the stabilisers	13
		Stowing the stabilisers	14
		Battery isolation switch	15
		Entering and leaving the platform	16
		Control box	17
		Emergency stop	17
		Emergency lowering	18
Battery charging	19		
Section 5	MAINTENANCE	Safety during maintenance	20
		Periodical maintenance & checks	20
		Storage	21
		Lubrication	22
		Hydraulic oil	23
		Electrical schematic	24
		Hydraulic schematic	25
Troubleshooting	26		
Section 6	TRANSPORT INSTRUCTIONS	Loading and unloading	27
		Lifting	28
		Preparation for transport	28
Section 7	MAINTENANCE & REPAIR RECORD	Maintenance and repair record	29
		Daily checks – Operator checklist	30

## Section 1. DESCRIPTION

### Introduction

This handbook provides information on the safe operation of this work platform. Operators should read and understand all of the information contained within this manual prior to operating the work platform.

**The handbook contains several warnings, these indicate situations which if not avoided could result in serious injury or death to persons, or damage to the machine or property.**

Additional copies of this handbook are available from the manufacturer at the address below.

Information contained in this handbook is based on the latest product information at time of publication. Pop-Up Products Ltd operate a policy of continuous improvement and therefore reserve the right to make product changes at any time without obligation.

### Description

The **POP-UP PLUS+** is a scissor lift type work platform, which is manoeuvred manually into work positions and elevated and lowered using an electro-hydraulic control system.

The standard machine includes the following standard features –

- 240 kg safe working load
- 4.5 metre working height
- 1.71 metre stowed height
- Easily manoeuvrable
- Pass through standard doors
- Simple operation
- Steel guard rails
- Non-slip platform
- Steerable wheels
- Brakes on two wheels
- Manually operated stabilisers
- Anti-crushing lowering delay
- Integral battery charger
- Emergency lowering facility
- Easily transportable
- Low maintenance
- Complies with EN280:2001

## Section 1. DESCRIPTION (cont.)

### Intended use

The machine has been designed to comply with the safety requirements of the Machinery Directive 98/37/EC taking guidance from the European Standard EN280:2001 Mobile Elevating Work Platforms.

The machine is intended to be used to lift persons, plus essential tools & materials, to enable work to be undertaken at height. Typical applications will include maintenance, cleaning, painting, etc. at varying heights above ground level.

### WARNING

**THE MACHINE MUST NOT BE USED IN APPLICATIONS OR FOR USES OUTSIDE OF THE SCOPE OF THIS HANDBOOK. SHOULD A CERTAIN APPLICATION NOT BE COVERED, THEN THE MANUFACTURER SHOULD BE CONTACTED.**

### Training

It is essential that persons operating this **POP-UP PLUS+** are fully trained in the setting up, safe use and inspection of this machine.

### WARNING

**OPERATION OF THIS MACHINE BY UNTRAINED OPERATORS MAY RESULT IN SERIOUS INJURY OR DEATH.**

### Modifications

No modifications must be made to this machine unless the manufacturer has given full written approval. If in doubt contact the manufacturer for advice.

Manufacturer's address –

Pop-Up Products Ltd  
Fourth Avenue  
Deeside Industrial Park  
Deeside  
Flintshire  
CH5 2NR  
UK

Tel .           01244 833111  
Fax.           01244 833112  
web            [www.popupproducts.co.uk](http://www.popupproducts.co.uk)

## Section 1. DESCRIPTION (cont.)

### Terminology



1. Work platform

2. Guard rails

3. Access gate

4. Lift cylinder

5. Control box

6. Emergency lowering control

7. Scissor assembly

8. Chassis

9. Brake

10. Pump/motor unit

11. Hydraulic tank

12. Battery

13. Battery charger

14. Isolation switch

15. Stabiliser(s)

## Section 2. SPECIFICATION

### Technical data

Safe working load (SWL) <i>equivalent to</i>	240 kg <i>1 person + 160 kg tools &amp; materials</i>
Maximum platform height	2.5 metres
Maximum working height	4.5 metres
Platform length	1.01 metres
Platform width	0.52 metres
Platform guard rail height	1.10 metres
Toe board height	0.15 metres
Maximum allowable manual force	200 Newtons
Maximum allowable wind speed	0.0 metres/sec
Maximum allowable chassis inclination	0 degrees
Electrical system –	12 volt DC
Motor	0.7 kW
Batteries	1 x 80 Ah
Battery charger	Universal 90v to 240v AC
Hydraulic system –	
Maximum pressure	13 MPa
Reservoir capacity	1.22 litre
Function speeds (approx.)	
Raise	24 seconds
Lower	25 seconds
Approx. no. of lifts (fully charged with SWL)	> 120
Overall length	1.26 metres
Overall height (stowed)	1.76 metres
Overall width (stabilisers stowed)	0.70 metres
Overall width (stabilisers deployed)	1.09 metres
Overall mass (GVW)	345 kg
Maximum wheel load	350 kg

## Section 2. SPECIFICATION (cont.)

### Operating site

Select a site for the machine from which the platform will be able to reach the required work area. A visual inspection of the operating site should be made before setting up the machine. Particular attention should be given to the following items –

#### 1. Ground conditions

Ensure that the ground on which the **POP-UP PLUS+** is to operate is capable of supporting the weight of the machine (including the weight of the operator plus tools & materials). Be aware of floors or coverings (e.g. manhole covers) that may not withstand point loadings exerted by the castor wheels.

The **POP-UP PLUS+** is fitted with four stabilisers to improve machine stability. An interlock system ensures that the stabiliser beams and legs are fully deployed before the work platform can be raised. It is essential that each of the four stabiliser feet are located on firm, solid ground. Failure to ensure this may result in machine instability.

#### 2. Ground flatness

The **POP-UP PLUS+** must only be operated on flat (0° chassis inclination) and level surfaces. The allowable chassis inclination is indicated when the spirit level bubble is within the marked limits. All castor wheels must be in full contact with the ground.

#### 3. Overhead obstructions

Ensure that adequate clearance is available above and around the platform before elevation.

### Noise and vibration

Noise levels emitted from this machine do not exceed 70 dB(A). Hand and arm vibration experienced on this machine does not exceed 2.5 m/s<sup>2</sup>.

## Section 2. SPECIFICATION (cont.)

### Limitations

The **POP-UP PLUS+** is limited to operation indoors. The machine must not be used outdoors. Please consult the manufacturer if you are unsure of any application for which the machine is to be used.

This machine has been tested for Electromagnetic Compatibility (EMC) however, operation near to high powered radio transmission apparatus (e.g. radar, antennae) or within strong electrical and/or magnetic fields may affect some features of this product.

#### **WARNING**

**THIS MACHINE HAS NOT BEEN DESIGNED FOR OPERATION WITHIN POTENTIALLY EXPLOSIVE ATMOSPHERES**

#### **WARNING**

**THIS MACHINE IS NOT ELECTRICALLY INSULATED AND MUST NEVER BE USED FOR LIVE LINE WORKING. DEATH OR SERIOUS INJURY CAN RESULT FROM CONTACT WITH, OR INADEQUATE CLEARANCE FROM, ELECTRICAL CONDUCTORS**

### Section 3. SAFETY RULES

- NEVER exceed the rated capacity (Safe Working Load or SWL) of the platform.
- NEVER use the **POP-UP PLUS+** as a 'crane' (e.g. by suspending loads from beneath the platform).
- NEVER make any attempt to increase the working height or outreach of the platform (e.g. by use of step-ladders in the platform).
- NEVER manoeuvre the **POP-UP PLUS+** on an inclined surface otherwise it may become uncontrollable.
- NEVER manoeuvre the **POP-UP PLUS+** whilst in its elevated position, as this may cause instability.
- NEVER manoeuvre the **POP-UP PLUS+** with a person or materials in the platform.
- NEVER enter or exit the platform unless the platform is in the lowered and transport position.
- NEVER apply external side loads to the platform or scissor structure.
- NEVER allow persons at ground level to operate the controls whilst the platform is occupied (unless in an emergency situation).
- NEVER operate the **POP-UP PLUS+** Outdoors.
- ALWAYS undertake the daily checks recommended in this handbook prior to operation of the machine.
- ALWAYS ensure that all instructions, warning and Safe Working Load decals are clean and legible.
- ALWAYS ensure the **POP-UP PLUS+** is positioned on adequate ground to support the weight of the machine.
- ALWAYS ensure that sufficient clearance is given if working near to live conductors.
- ALWAYS ensure that castor brakes have been engaged before elevating the work platform.
- ALWAYS ensure hands are within the confines of the guardrails whilst elevating the work platform.

### Section 3. SAFETY RULES (cont.)

- ALWAYS** ensure that the platform does not come into contact with fixed objects (e.g. buildings, etc.) or moving objects (e.g. vehicles, other plant equipment, etc.).
- ALWAYS** replace any removable guard rails (e.g. close & lock access gate) to enable full edge protection to be maintained.
- ALWAYS** ensure that the load is evenly distributed within the platform.
- ALWAYS** ensure the safety of persons that may enter the area around the platform (e.g. cordon off areas to prevent persons entering the danger area).

## Section 4. OPERATING INSTRUCTIONS

### Daily checks

Prior to operating the **POP-UP PLUS+**, the following items must be checked –

- Structure (e.g. damage, cracks, corrosion, abrasion, welds, connections)
- Platform (floor, rails)
- Castors (smooth movement, damage)
- Brakes
- Stabilisers
- Hydraulic oil
- Oil leaks
- Battery condition
- Raise and lower functions (including descent delay) \*
- Emergency stop and lowering functions
- Limit switches
- Safety decals

\* The raise and lower functions can be tested by removing the upper control box from its holder in the work platform and using the controls whilst at ground level. (NOTE – unless in an emergency situation, this practice must not be employed when a person is in the work platform).

If the above pre-use checks reveal malfunctions or damage on the **POP-UP PLUS+**, then the machine must not be used until the problem is rectified. If in doubt, seek further assistance from the manufacturer.

If safety decals are no longer legible or missing then contact the manufacturer for replacements.

The DAILY CHECKS page in Section 7 of this handbook may be photocopied to provide an aide memoir for operators when undertaking these important checks.

## Section 4. OPERATING INSTRUCTIONS (cont.)

### WARNING

BEFORE OPERATING YOUR **POP-UP PLUS+**, YOU MUST ENSURE THAT YOU HAVE BEEN ADEQUATELY TRAINED IN ITS USE AND HAVE FULLY READ AND UNDERSTOOD THIS OPERATOR'S HANDBOOK, PAYING PARTICULAR ATTENTION TO SECTION 3 – SAFETY RULES.

#### Manoeuvring the platform

Manoeuvre the platform into position using both hands on the platform rails as shown below. Take care to avoid trapping hands or feet whilst manoeuvring the platform.



Never manoeuvre the **POP-UP PLUS+** whilst it is elevated or with a person, tools or materials in the platform.

## Section 4. OPERATING INSTRUCTIONS (cont.)

### Engaging the brakes

Always ensure that both front castor brakes are engaged before elevating the work platform to prevent any inadvertent movement.

The brakes are engaged by pushing down on the lever as shown in the photographs below. Releasing the brake is simply a reversal of the engaging procedure.



Engage



Release

### Deploying the stabilisers

The **POP-UP PLUS+** is fitted with four stabilisers, each of which must be fully deployed before the work platform can be raised. To deploy each stabiliser, follow the four steps below –

1. Pull out the red knob on the stabiliser beam housing.
2. Extend the beam until it locks in position.
3. Pull out the Blue Plunger on the stabiliser leg, so that the foot drops to the ground. Ensure the plunger pin engages into the radial slot at the top of the leg.
4. Wind handle clockwise until hand tight. Ensure the yellow stabiliser indicator lamp is lit. \*\*



Stage 2 & 3



Stage 4



Stage 1

## Section 4. OPERATING INSTRUCTIONS (cont.)

\*\* The stabilisers provide additional stability for the machine, and it is not necessary to raise the castors off the ground.

Repeat the above steps for each stabiliser

### Stowing the stabilisers

#### WARNING

**RETRACTING ANY OR ALL OF THE STABILISERS WHEN THE WORK PLATFORM IS ELEVATED MAY RESULT IN MACHINE INSTABILITY. STABILISERS MUST ONLY BE RETRACTED WHEN THE WORK PLATFORM HAS BEEN FULLY LOWERED TO ITS TRANSPORT POSITION.**

To retract each stabiliser, follow the five steps below –

1. Turn handle anticlockwise to loosen the stabiliser foot.
2. Pull out and hold Blue Plunger.
3. Lift the stabiliser leg until it is in the raised position.
4. Release the Blue Plunger ensuring it is seated in the radial ring around the bottom of the stabiliser leg.
5. Pull the red knob on the stabiliser beam outwards.
6. Push the beam back into the housing until it locks in the transport position.

Repeat the above steps for each stabiliser.

Always ensure that each stabiliser leg is fully raised and each beam is fully retracted prior to manoeuvring the **POP-UP PLUS+**. Failure to do this may result in damage to property and/or the machine.

## Section 4. OPERATING INSTRUCTIONS (cont.)

### Battery isolation switch

The **POP-UP PLUS+** is provided with a key operated switch which is used to isolate the battery and therefore the electrical system, preventing unauthorised use. To enable the electrical system, insert the key and turn clockwise, as shown below making sure the emergency stop button is fully released.



Ensure that when the machine is not in use, the emergency stop button is depressed and the key removed. Further electrical isolation can be achieved by selecting '0' on the maintenance isolator switch. Position '1' is for normal operation and position '2' is for charging the machine.

## Section 4. OPERATING INSTRUCTIONS (cont.)

### Entering and leaving the work platform

Always use three points of contact when entering or exiting the platform, using the handholds provided. For example, use two hands and one foot, as shown below. Use the step provided on the base of the machine.

On entering the platform, ensure that the gate is closed behind you.



## Section 4. OPERATING INSTRUCTIONS (cont.)

### Control box

The control box houses the platform raise and lower controls.

Pressing the 'UP' button raises the platform.  
Pressing the 'DOWN' button lowers the platform.

To avoid crushing and shearing hazards, a delay feature is fitted which actuates when the platform is lowered to the transport position. The platform will momentarily stop to enable the operator to look around the machine to determine whether any persons are adjacent to the scissor mechanism. After a time delay, the lowering control will be re-enabled to permit the operator to continue to lower to the transport position.

Take care to avoid repeated jerky movements which could cause unnecessary impact loads on the structure.



### Emergency stop

An emergency stop button is provided on the control box. Once depressed, this isolates power to the raise and lower functions.

To restore functionality, twist the emergency stop button key clockwise to release the button, as shown below.

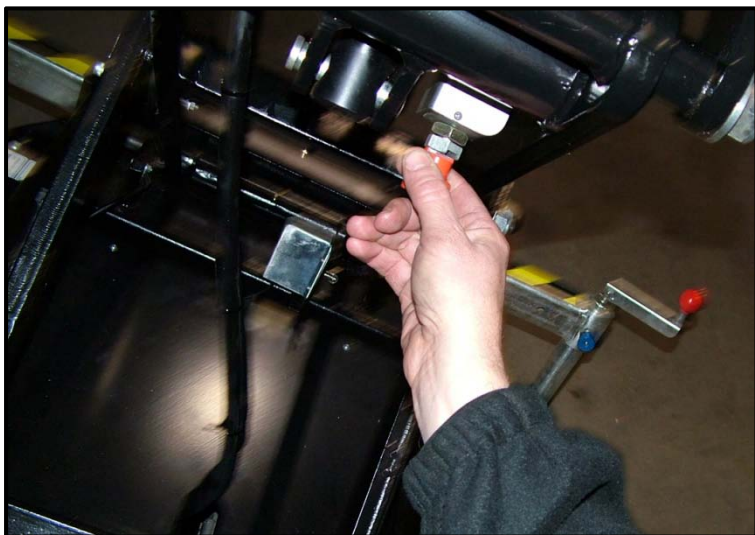


Turning the key-operated battery isolator switch to the '0' position also has the effect of isolating power to raise and lower functions.

## Section 4. OPERATING INSTRUCTIONS (cont.)

### Emergency lowering

1. Pull out Plunger 'A' and rotate through 90 degrees.
2. Turn valve 'B' anticlockwise until platform starts to lower. To stop the platform at any time, turn valve clockwise until platform stops descending..
3. Once platform has descended fully, please ensure valve 'B' is closed off by turning clockwise.



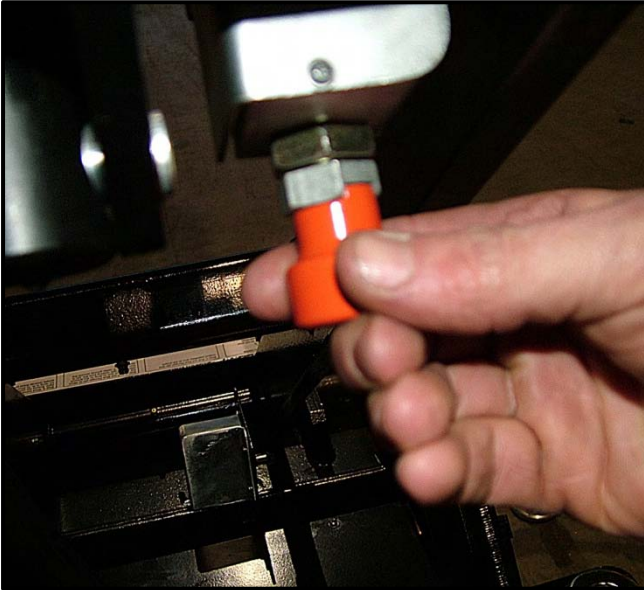
Plunger 'A'



Valve 'B'

## Section 4. OPERATING INSTRUCTIONS (cont.)

### Lock off Valve Re-Setting



The plunger valve must be re-set to enable the machine to operate correctly. To reset the valve firstly ensure Valve 'B' has been fully closed. Depress the raise button on the pendant control and raise the platform until the maintenance stands can be deployed. Once the stands have been deployed simply pull Plunger 'A' and turn through 90 degrees. Push the plunger back into the slot as shown left. Depress the raise button once again and re-set the maintenance stands. The machine is now able to operate correctly.

### Battery charging

A battery condition meter is fitted to the **POP-UP PLUS+** as shown in the photograph below. Pressing the button above the meter displays the amount of charge in the battery. When all segments of the display are illuminated the battery is fully charged. When only 2 segments are illuminated then the battery should be recharged.

The **POP-UP PLUS+** is supplied with a dedicated battery charger, which is separate to the machine. Do not use any other type of battery charger to charge your **POP-UP PLUS+** machine.

To charge the battery, follow these steps -

1. Turn the isolator switch to the 'off' position (0).
2. Connect either the 240v or 110v lead (depending on mains supply) to the **POP-UP PLUS+** at the point shown below.
3. Connect the Mains lead to a suitable power supply (Either 110v or 240v)
4. Turn the Isolator switch to the 'Charge' Position (2) and leave the charger to complete the charging cycle. It will shut off automatically once finished. The battery should be fully recharged after a period of 12 hours, which is indicated by the 95% light illuminating on the Battery Charge Indicator panel as shown below.



## Section 5. MAINTENANCE

### Safety during maintenance

When performing maintenance on the **POP-UP PLUS+** with the platform elevated, always ensure that the maintenance props are engaged as shown in the illustration below.



### WARNING

**FAILURE TO ENGAGE THE MAINTENANCE PROPS MAY RESULT IN THE PLATFORM LOWERING WITHOUT WARNING.**

### Periodical maintenance & checks

The following checks should be undertaken at the recommended intervals shown.

	Daily / Pre-use	Monthly	6 Monthly	12 Monthly
Inspect structure	●	●	●	●
Check connections	●	●	●	●
Inspect platform	●	●	●	●
Check castor wheels	●	●	●	●
Check brake function	●	●	●	●
Inspect stabilisers	●	●	●	●
Check hydraulic oil level	●	●	●	●
Inspect for oil leaks	●	●	●	●
Check battery condition	●	●	●	●
Check raise / lower function	●	●	●	●
Inspect limit switches	●	●	●	●
Inspect safety decals	●	●	●	●
Inspect wiring		●	●	●
Check electrical connectors		●	●	●
Lubricate roller guides		●	●	●
Lubricate grease nipples		●	●	●
Lubricate pivot pins			●	●
Lubricate castor mounts			●	●
Replace hydraulic oil				●

## Section 5. MAINTENANCE (cont.)

### Periodical maintenance & checks (cont.)

Prior to first use of the **POP-UP PLUS+**, all daily / pre-use checks must be undertaken. If the machine has been in storage for a long period of time, it may be necessary to undertake additional checks and tests per the table on the preceding page (e.g. lubrication, hydraulic oil, battery condition).

The Lifting Operations and Lifting Equipment Regulations 1998 (LOLER) require that lifting equipment for lifting persons must be Thoroughly Examined every six months.

Following any maintenance on the **POP-UP PLUS+**, a full function test should be undertaken to ensure correct operation of the machine.

It is essential that only manufacturer's approved replacement parts are used when maintaining and servicing the **POP-UP PLUS+**. Failure to do so may result in an unsafe or unstable machine.

### Storage

The electrical components of this **POP-UP PLUS+** are not protected from external weather conditions and the machine should therefore not be stored outdoors. Storage in a clean, dry indoor environment is recommended.

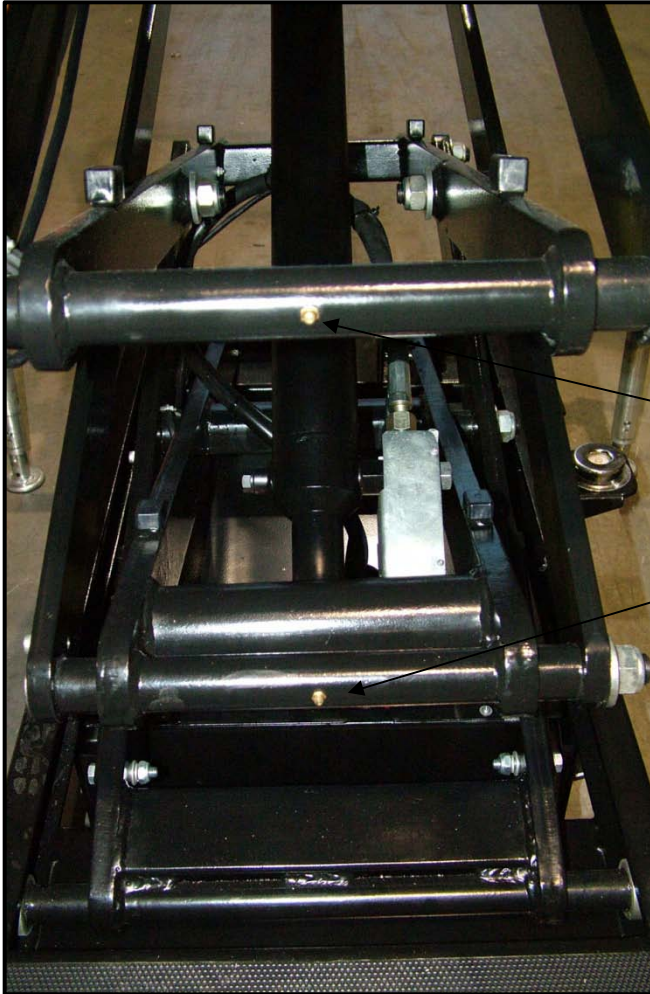
Frequent checks on the condition of the machine should be made to ensure no excessive deterioration occurs due to the environment in which the machine is housed.

## Section 5. MAINTENANCE (cont.)

### Lubrication

The required lubrication points are shown in the photograph below.

The lubricant recommended for use with this **POP-UP PLUS+** is : Standard Machine Grease



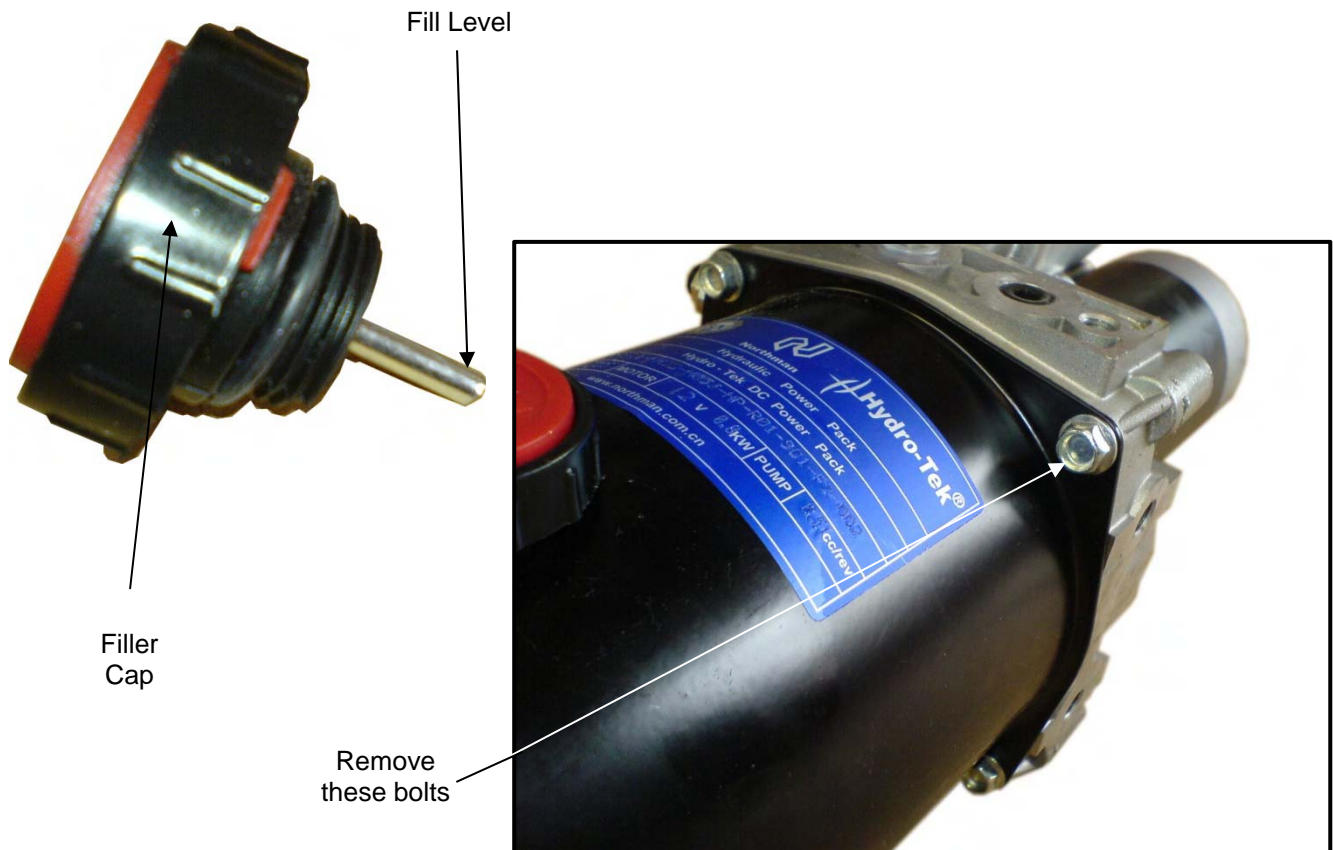
*Lubrication points.  
Are to be found on  
the end of the  
scissor pack, both  
ends of the  
machine.*

## Section 5. MAINTENANCE (cont.)

### Hydraulic oil

The hydraulic oil level can be checked by removing the filler cap. The correct amount of oil is in the tank when the tip of the level rod has hydraulic oil on it. This check must be carried out on a level surface.

The hydraulic oil can be topped up by adding oil to the filler located as shown below. Take care not to spill hydraulic fluid over any of the surrounding machine components.



The hydraulic oil can be drained by removing the tank by removing the bolts as shown above and separating the tank from the pump body. The hydraulic fluid can then be correctly disposed of. Re-assembly is the reverse of above.

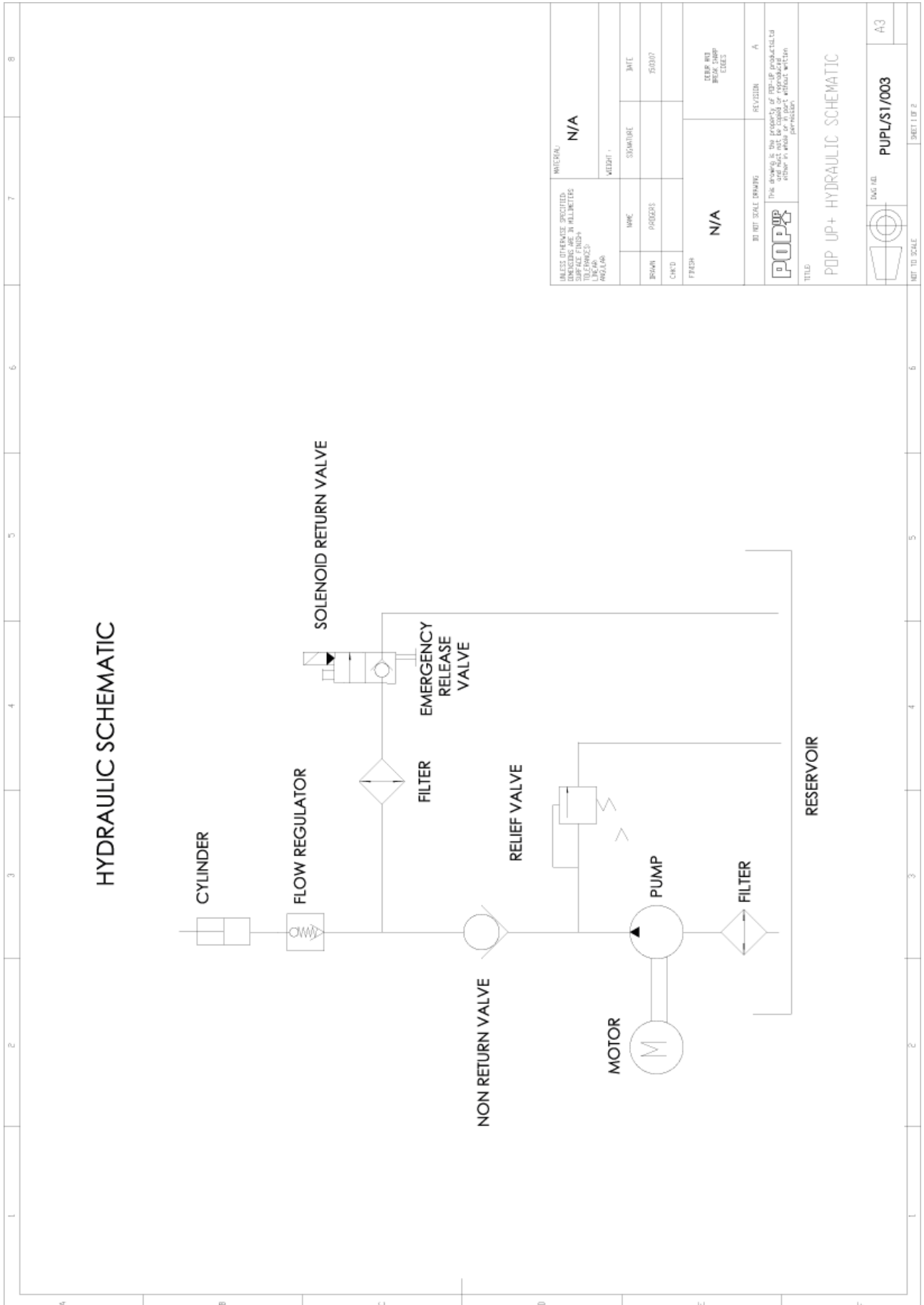
The hydraulic oil recommended for use with this **POP-UP PLUS+** is: Mineral basis hydraulic oil with lubricating, antifoaming, anti-corrosive, antioxidant HL-HLP (ISO and UNI HM)-HV-HLPD performances according to DIN51524 part 1-2 standards.

Minimum viscosity	15cts (23°E / 77, 39 SSU at 100°F)
Max. Viscosity at starting up	800cts (105,6°E / 3708 SSU at 100°F)
Max. Working viscosity	100 cts (13,2 E / 463,5 SSU at 100°F)
Suggested viscosity range	25÷40 cts = (3,47÷5,35° E / 119,3÷186,3 SSU a 100°F)
Allowed temperature	Max 80°C (176°F)
Recommended temperature	30÷60°C (86÷140°F)



Section 5. MAINTENANCE (cont.)

Hydraulic schematic



UNLESS OTHERWISE SPECIFIED, DIMENSIONS ARE IN MILLIMETERS SURFACE FINISH: UNLESS OTHERWISE SPECIFIED, ALL DIMENSIONS ARE TO BE SHOWN AS DIMENSIONS TO FACE UNLESS OTHERWISE SPECIFIED.		MATERIAL: N/A	
DATE	BY	SIGNATURE	DATE
5/20/07			
DESIGNER	PROJECT		
CHKD			
REVISED			
BY NOT SCALE DRAWING		REVISION	A
POP-UP		This drawing is the property of POP-UP products, Ltd. It is to be used only for the project and without written permission.	
TITLE: POP UP+ HYDRAULIC SCHEMATIC			
NOT TO SCALE		DWG. NO.	PUP/LS1/003
		SHEET	A3
		SHEET 1 OF 2	

## Section 5. MAINTENANCE (cont.)

### Trouble shooting

PROBLEM	CAUSE	REPAIR
Platform does not raise (motor not running)	1. Faulty wiring.	1. Check the wiring referring to the electrical schematic.
	2. Battery is disconnected.	2. Reconnect the battery.
	3. Battery charge is insufficient.	3. Charge the battery.
	4. Stabilisers not deployed.	4. Ensure all stabilisers are deployed and indicator lamps are lit.
Platform does not raise (motor running)	1. Faulty adjustment of relief valve.	1. Adjust relief valve.
	2. Faulty hydraulic pump.	2. Replace power pack.
	3. Insufficient hydraulic oil.	3. Add hydraulic oil.
Platform creeps (uncontrolled lowering)	1. Oil leakage in power pack.	1. Replace lowering valve.
	2. Oil leakage from hydraulic circuit.	2. Check hydraulic circuit and repair.
Oil leakage from cylinder.	Faulty sealing.	Replace sealing.
Oil leakage from piping or joint.	Insufficient tightening or seal in valid.	Tighten joint again or replace seal.
Oil leakage from air breather.	Excessive quantity of oil.	Reduce oil quantity.

## Section 6. TRANSPORT INSTRUCTIONS

### Loading and unloading

When loading or unloading the **POP-UP PLUS+**, use one of the methods shown below.



When using a forklift to lift the **POP-UP PLUS+**, ensure the forks are sufficiently inserted into the forklift pockets in the base of the machine. Safety decals applied to the **POP-UP PLUS+** show the location of the forklift pockets.

When using a tail lift to load or unload the **POP-UP PLUS+** ensure that brakes are applied to both castor wheels. Ensure that the capacity of the tail lift is sufficient to handle the **POP-UP PLUS+**. Take care when manoeuvring the machine on the tail lift.

### WARNING

**NEVER ATTEMPT TO LOAD OR UNLOAD THE POP-UP PLUS+ BY MANUAL EFFORT ONLY, SERIOUS INJURY, MACHINE OR PROPERTY DAMAGE COULD RESULT.**

## Section 6. TRANSPORT INSTRUCTIONS (cont.)

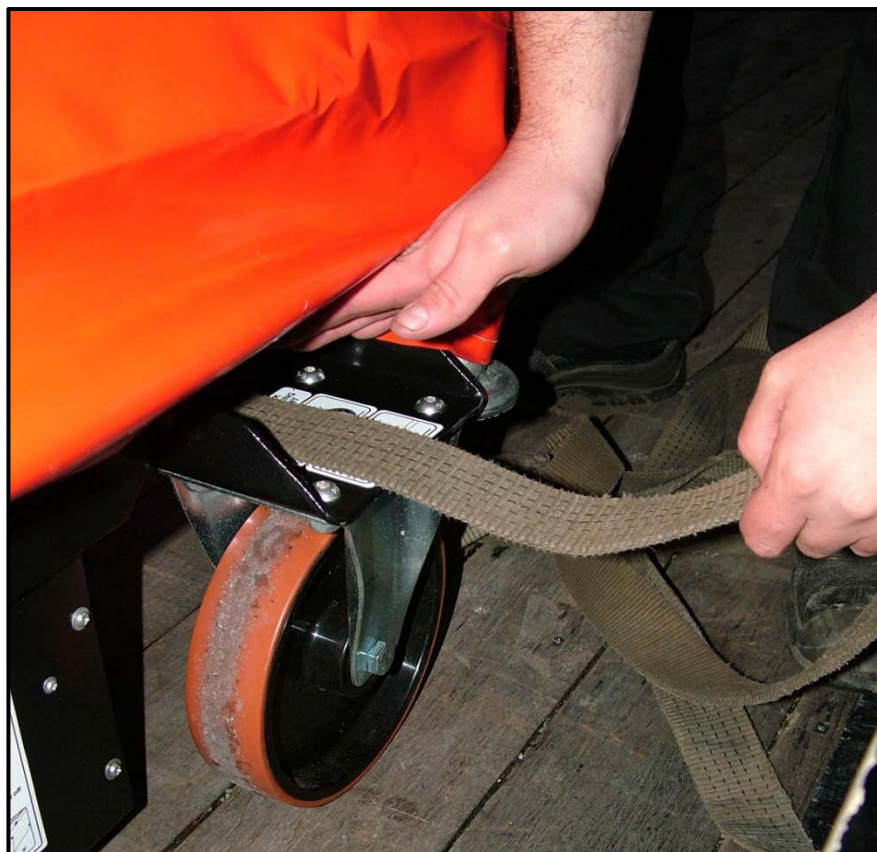
### Lifting

No lifting attachment points are provided on the **POP-UP PLUS+** and therefore lifting of the machine (e.g. with a crane or straps) is prohibited.

### Preparation for transport

Prior to transporting the **POP-UP PLUS+** on a vehicle, ensure that the following precautions are taken in order to avoid damage to the machine or damage to the transporting vehicle.

1. Ensure that the platform is fully lowered to its rest position.
2. Ensure that loose items (e.g. control box, battery charger) are secured to the platform.
3. Ensure brakes are engaged on both rear castor wheels.
4. Secure the **POP-UP PLUS+** to the transport vehicle using straps across the platform as shown below.





**Section 7. MAINTENANCE AND REPAIR RECORD (cont.)**

**Daily checks – Operator checklist**

*The following checklist has been provided to enable daily pre-operation checks to be undertaken prior to use of this **POP-UP PLUS+**. These checks should be carried out each working day or at the beginning of each shift. The purpose of the checks is to identify any wear and tear or malfunction of the machine’s components and systems.*

**WARNING**

**FAILURE TO UNDERTAKE THESE CHECKS MAY RESULT IN DEFECTS ON, OR DETERIORATION OF THIS **POP-UP PLUS+** GOING UNDETECTED AND POSSIBLY RESULTING IN AN UNSAFE MACHINE.**

*Note that Regulation 8 of the Lifting Operations and Lifting Equipment Regulations 1998 (LOLER) require that persons using lifting equipment have appropriate training and instructions to enable them to identify whether lifting equipment is safe to use.*

Machine number	
----------------	--

1. Prior to operating the platform, the following items must be checked –

	OK? (please tick)		OK? (please tick)
Structure		Battery condition	
Platform		Raise and lower	
Castors		Emergency stop	
Brakes		Emergency lower	
Stabilisers		Limit switch	
Hydraulic oil		Safety decals	
Oil leaks			

Checked by	
Date	

2. Operate raise, lower and emergency stop functions to ensure correct operation.

*Should any defects be identified in any of the above areas, these should be reported to your employer. It may be necessary seek further assistance from the supplier of the machine, this may be the hire company or the manufacturer. You should only rectify any defects if you are authorised and competent to do so.*

**Do not use the machine unless each of the items above is checked and stated OK.**